

HLA-DR antibody [MEM-12] (PerCP)

Cat. No. GTX80021

Host	Mouse
Clonality	Monoclonal
Isotype	IgG1
Application	FACS
Reactivity	Human

Reference (2)

Package

100 test

APPLICATION

Application Note

*Optimal dilutions/concentrations should be determined by the researcher.

Suggested dilution	Recommended dilution
FACS	10 µl reagent / 100 µl of whole blood or 10 ⁶ cells in a suspension

Not tested in other applications.

Product Note

This antibody recognizes common epitope on human HLA-DR which is dependent on the association of alpha and beta chains.

PROPERTIES

Form	Liquid
Buffer	PBS
Preservative	15mM Sodium azide
Storage	Store as concentrated solution. Centrifuge briefly prior to opening vial. Store at 4°C. DO NOT FREEZE. Protect from light.
Concentration	Batch dependent (Please refer to the vial label for the specific concentration.)
Immunogen	thymocyte membrane
Purification	Purified by size-exclusion chromatography
Conjugation	Peridinin-chlorophyll proteins (PerCP)

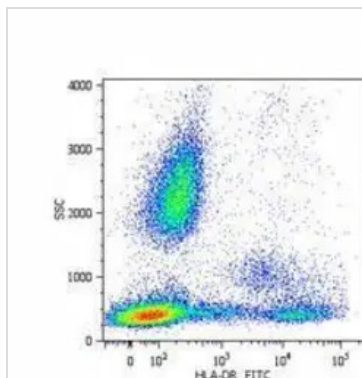
Note

For laboratory research use only. Not for any clinical, therapeutic, or diagnostic use in humans or animals. Not for animal or human consumption.

Purchasers shall not, and agree not to enable third parties to, analyze, copy, reverse engineer or otherwise attempt to determine the structure or sequence of the product.



For full product information, images and publications, please visit our [website](#).

DATA IMAGES

GTX80021 FACS Image

Surface staining of human peripheral blood cells with anti-human HLA-DR (MEM-12) FITC.



For full product information, images and publications, please visit our [website](https://www.genetex.com).