

CD31 antibody [MEM-05] (APC)

Cat. No. GTX80031

| | |
|--------------|------------|
| Host | Mouse |
| Clonality | Monoclonal |
| Isotype | IgG1 |
| Applications | FCM |
| Reactivity | Human |

Package
100 test

Applications

Application Note

*Optimal dilutions/concentrations should be determined by the researcher.

| Suggested dilution | Recommended dilution |
|--------------------|--|
| FCM | 10 µl reagent / 100 µl of whole blood or 10 ⁶ cells in a suspension |

Not tested in other applications.

Properties

| | |
|---------------|--|
| Form | Liquid |
| Buffer | PBS |
| Preservative | 15mM Sodium azide |
| Storage | Store as concentrated solution. Centrifuge briefly prior to opening vial. Store at 4°C. DO NOT FREEZE. Protect from light. |
| Concentration | Batch dependent (Please refer to the vial label for the specific concentration.) |
| Immunogen | Leukocytes of patient suffering from LGL-type leukaemia |
| Purification | Purified by size-exclusion chromatography |
| Conjugation | Allophycocyanin (APC) Wavelength |

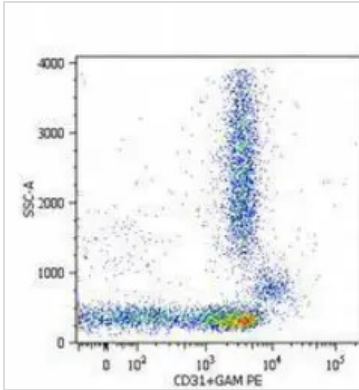
Note

For laboratory research use only. Not for any clinical, therapeutic, or diagnostic use in humans or animals. Not for animal or human consumption.

Purchasers shall not, and agree not to enable third parties to, analyze, copy, reverse engineer or otherwise attempt to determine the structure or sequence of the product.



For full product information, images and publications, please visit our [website](#).

DATA IMAGES

GTX80031 FCM Image

Surface staining of lysed and wash human peripheral blood with purified anti-human CD31 (MEM-05) (detection by Goat anti-mouse IgG1 PE).



For full product information, images and publications, please visit our [website](https://www.genetex.com).