

## CD62L antibody [MEL-14] (FITC)

Cat. No. GTX80035

Host	Rat
Clonality	Monoclonal
Isotype	IgG3a
Application	FACS
Reactivity	Mouse

Package  
100 µg

## PRODUCT

## Summary

The MEL-14 antibody is specific for mouse CD62L, also known as L-Selectin, a cell adhesion molecule which facilitates lymphocyte "rolling" on activated vascular endothelium and homing to high endothelial venules (HEV) as immune cells transigrate from blood into peripheral tissues. L-Selectin is a member of a family of Selectin molecules which act together with the integrin  $\alpha$ family of adhesion molecules to mediate leukocyte-endothelial interactions. L-Selectin is characteristically expressed by neutrophils, and is also found on B cells, monocytes, granulocytes, and at varying levels on naive, effector and memory T cells. It is rapidly shed upon cell activation, releasing into the circulation a soluble form whose biological role is of particular interest in cancer biology research.

## APPLICATION

## Application Note

\*Optimal dilutions/concentrations should be determined by the researcher.

Suggested dilution	Recommended dilution
FACS	Assay dependent

Not tested in other applications.

**Calculated MW** 42 kDa. ( [Note](#) )

## PROPERTIES

Form	Liquid
Buffer	10mM NaH <sub>2</sub> PO <sub>4</sub> , 150mM NaCl, 0.1% Gelatin
Preservative	0.09% Sodium azide
Storage	Store as concentrated solution. Centrifuge briefly prior to opening vial. Store at 4°C. DO NOT FREEZE. Protect from light.
Concentration	0.5 mg/ml (Please refer to the vial label for the specific concentration.)
Immunogen	C3H/eb mouse B cell lymphoma 38C-13
Purification	Purified by affinity chromatography From tissue culture supernatant
Conjugation	Fluorescein isothiocyanate (FITC)



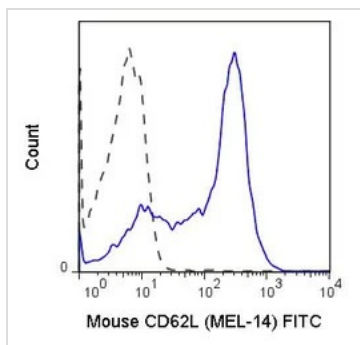
For full product information, images and publications, please visit our [website](#).

Date 2024 / 05 / 20 Page 1 of 2

For laboratory research use only. Not for any clinical, therapeutic, or diagnostic use in humans or animals. Not for animal or human consumption.

**Note**

Purchasers shall not, and agree not to enable third parties to, analyze, copy, reverse engineer or otherwise attempt to determine the structure or sequence of the product.

**DATA IMAGES**

**GTX80035 FACS Image**

FACS analysis of C57Bl/6 splenocytes using GTX80035 CD62L antibody [MEL-14] (FITC).

Solid line : Primary antibody

Dashed line : FITC rat IgG2a isotype control

Antibody amount : 0.25  $\mu$ g



For full product information, images and publications, please visit our [website](https://www.genetex.com).