

Hsp90 antibody [MBH90AB]

Cat. No. GTX80037

Host	Mouse
Clonality	Monoclonal
Isotype	IgG1
Applications	WB
Reactivity	Human, Mouse, Bovine

Package
100 µg

Applications

Application Note

*Optimal dilutions/concentrations should be determined by the researcher.

Suggested dilution	Recommended dilution
WB	Assay dependent

Not tested in other applications.

Product Note

This antibody recognizes the epitope EEVE within N-terminal part of ubiquitously expressed Hsp90 alpha and Hsp90 beta proteins.

Properties

Form	Liquid
Buffer	PBS
Preservative	15mM Sodium azide
Storage	Store as concentrated solution. Centrifuge briefly prior to opening vial. Store at 4°C. DO NOT FREEZE.
Concentration	1 mg/ml (Please refer to the vial label for the specific concentration.)
Immunogen	Peptide corresponding to the sequence EEVHHGEEVEEC within N-terminal part of human Hsp90.
Purification	Protein A purified
Conjugation	Unconjugated

Note

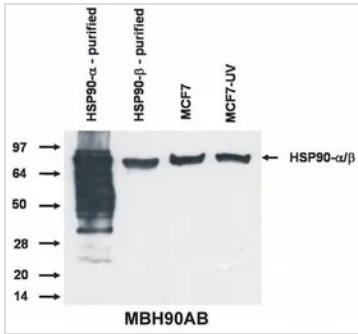
For laboratory research use only. Not for any clinical, therapeutic, or diagnostic use in humans or animals. Not for animal or human consumption.

Purchasers shall not, and agree not to enable third parties to, analyze, copy, reverse engineer or otherwise attempt to determine the structure or sequence of the product.



For full product information, images and publications, please visit our [website](#).

DATA IMAGES



GTX80037 WB Image

WB analysis of Hsp90 alpha and beta protein using GTX80037 Hsp90 antibody [MBH90AB].



For full product information, images and publications, please visit our [website](#).