

## CD18 antibody [M18/2] (Low Endotoxin)

Cat. No. GTX80045

Host	Rat
Clonality	Monoclonal
Isotype	IgG2a
Applications	WB, IHC-P, IHC-Fr, FCM, IP, Functional Assay
Reactivity	Mouse

**Package**  
100 µg

## Applications

## Application Note

\*Optimal dilutions/concentrations should be determined by the researcher.

Suggested dilution	Recommended dilution
WB	Assay dependent
IHC-P	Assay dependent
IHC-Fr	Assay dependent
FCM	Assay dependent
IP	Assay dependent
Functional Assay	Assay dependent

Not tested in other applications.

**Calculated MW** 85 kDa. ( [Note](#) )**Product Note** We do not recommend use of this product for Dog samples.

## Properties

Form	Liquid
Buffer	Filter-sterilized PBS
Preservative	No preservatives
Storage	Store as concentrated solution. Centrifuge briefly prior to opening vial. Store at 4°C. DO NOT FREEZE.
Concentration	1 mg/ml (Please refer to the vial label for the specific concentration.)
Immunogen	Murine cytotoxic T cell glycoproteins
Purification	Protein G purified
Endotoxin	< 0.01 EU/µg (determined by the LAL assay)
Conjugation	Unconjugated



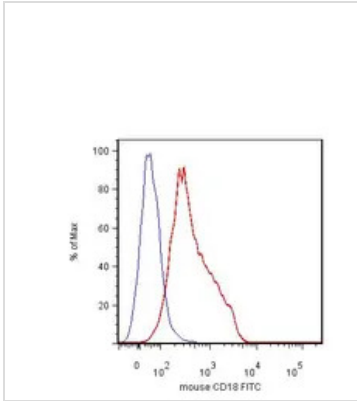
For full product information, images and publications, please visit our [website](#).

For laboratory research use only. Not for any clinical, therapeutic, or diagnostic use in humans or animals. Not for animal or human consumption.

## Note

Purchasers shall not, and agree not to enable third parties to, analyze, copy, reverse engineer or otherwise attempt to determine the structure or sequence of the product.

## DATA IMAGES



### GTx80045 FCM Image

Surface staining of mouse splenocytes using anti-CD18 antibody (clone M18/2) (GTx80044) .



For full product information, images and publications, please visit our [website](#).