

## CD11b antibody [M1/70] (PE)

Cat. No. GTX80052

Host	Rat
Clonality	Monoclonal
Isotype	IgG2b
Applications	FCM
Reactivity	Human, Mouse, Baboon, Chimpanzee, Cynomolgus monkey, Rhesus Monkey

References ( 11 )

Package

100 µg

## PRODUCT

## Summary

The M1/70 antibody reacts with human and mouse CD11b, also known as integrin  $\alpha$  M. This 165-170 kDa cell surface glycoprotein is part of a family of integrin  $\alpha$  receptors that mediate adhesion between cells (cell-cell) and components of the extracellular matrix, e.g. fibrinogen (cell-matrix). In addition, integrin  $\alpha$ s are active signaling receptors which recruit leukocytes to inflammatory sites and promote cell activation. Complete, functional integrin  $\alpha$  receptors consist of distinct combinations of integrin  $\alpha$  chains which are differentially expressed. integrin  $\alpha$  M (CD11b) assembles with integrin  $\beta$  2 (CD18) into a receptor known as Macrophage Antigen-1 (Mac-1) or complement receptor type 3 (CR3). This receptor binds and induces intracellular signaling through ICAM-1 on endothelial cells and can also facilitate removal of iC3b bearing foreign cells.

## Applications

## Application Note

\*Optimal dilutions/concentrations should be determined by the researcher.

Suggested dilution	Recommended dilution
FCM	Assay dependent

Not tested in other applications.

## Properties

Form	Liquid
Buffer	10mM NaH <sub>2</sub> PO <sub>4</sub> , 150mM NaCl, 0.1% Gelatin
Preservative	0.09% Sodium azide
Storage	Store as concentrated solution. Centrifuge briefly prior to opening vial. Store at 4°C. DO NOT FREEZE. Protect from light.
Concentration	0.2 mg/ml (Please refer to the vial label for the specific concentration.)
Immunogen	B10 mouse spleen cells enriched for T cells
Purification	Purified by affinity chromatography From tissue culture supernatant
Conjugation	Phycoerythrin (PE) <a href="#">Wavelength</a>



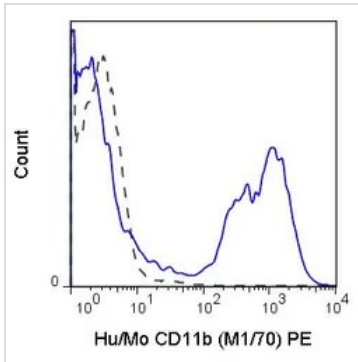
For full product information, images and publications, please visit our [website](#).

For laboratory research use only. Not for any clinical, therapeutic, or diagnostic use in humans or animals. Not for animal or human consumption.

## Note

Purchasers shall not, and agree not to enable third parties to, analyze, copy, reverse engineer or otherwise attempt to determine the structure or sequence of the product.

## DATA IMAGES



### GTX80052 FCM Image

FACS analysis of C57Bl/6 bone marrow cells using GTX80052 CD11b antibody [M1/70] (PE).

Solid line : Primary antibody

Dashed line : PE rat IgG2b isotype control

Antibody amount : 0.125 µg



For full product information, images and publications, please visit our [website](https://www.genetex.com).