

HLA-DR + HLA-DP antibody [HL-38] (PE)

Cat. No. GTX80099

| | |
|---------------------|------------|
| Host | Mouse |
| Clonality | Monoclonal |
| Isotype | IgG2a |
| Applications | FCM |
| Reactivity | Human, Pig |

Package
100 test

Applications

Application Note

*Optimal dilutions/concentrations should be determined by the researcher.

| Suggested dilution | Recommended dilution |
|--------------------|--|
| FCM | 20 µl reagent / 100 µl of whole blood or 10 ⁶ cells in a suspension |

Note : Do not need a permeabilization step.

Not tested in other applications.

Product Note This antibody recognizes common epitope on beta-chain of human HLA-DR and HLA-DP.

Properties

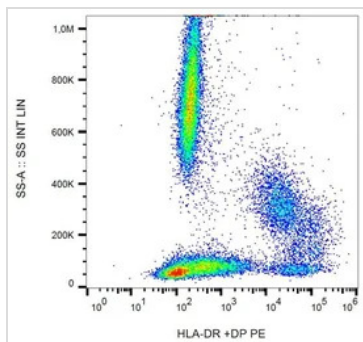
| | |
|----------------------|--|
| Form | Liquid |
| Buffer | PBS |
| Preservative | 15mM Sodium azide |
| Storage | Store as concentrated solution. Centrifuge briefly prior to opening vial. Store at 4°C. DO NOT FREEZE. Protect from light. |
| Concentration | Batch dependent (Please refer to the vial label for the specific concentration.) |
| Immunogen | Raji Burkitt's lymphoma cell line |
| Purification | Purified by size-exclusion chromatography |
| Conjugation | Phycoerythrin (PE) Wavelength |

Note For laboratory research use only. Not for any clinical, therapeutic, or diagnostic use in humans or animals. Not for animal or human consumption.

Purchasers shall not, and agree not to enable third parties to, analyze, copy, reverse engineer or otherwise attempt to determine the structure or sequence of the product.



For full product information, images and publications, please visit our [website](#).

DATA IMAGES

GTX80099 FCM Image

FACS analysis of human peripheral blood using GTX80099 HLA-DR + HLA-DP antibody [HL-38] (PE).



For full product information, images and publications, please visit our [website](#).