

CD52 antibody [HI186] (APC)

Cat. No. GTX80134

Host	Mouse
Clonality	Monoclonal
Isotype	IgG2b
Applications	FCM
Reactivity	Human

References (1)
Package
100 test

Applications

Application Note

*Optimal dilutions/concentrations should be determined by the researcher.

Suggested dilution	Recommended dilution
FCM	10 µl reagent / 100 µl of whole blood or 10 ⁶ cells in a suspension

Not tested in other applications.

Properties

Form	Liquid
Buffer	PBS
Preservative	15mM Sodium azide
Storage	Store as concentrated solution. Centrifuge briefly prior to opening vial. Store at 4°C. DO NOT FREEZE. Protect from light.
Concentration	Batch dependent (Please refer to the vial label for the specific concentration.)
Immunogen	Human tonsil
Purification	Purified by size-exclusion chromatography
Conjugation	Allophycocyanin (APC) Wavelength

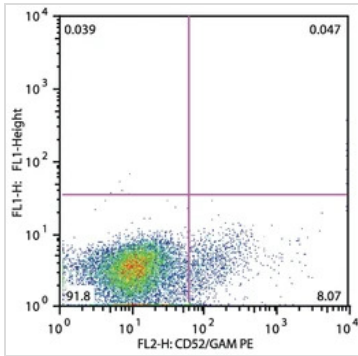
Note

For laboratory research use only. Not for any clinical, therapeutic, or diagnostic use in humans or animals. Not for animal or human consumption.

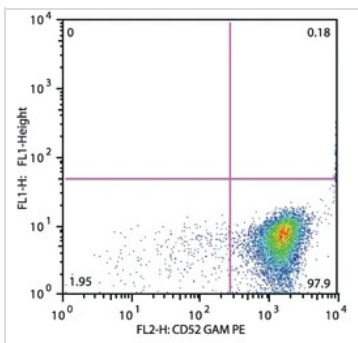
Purchasers shall not, and agree not to enable third parties to, analyze, copy, reverse engineer or otherwise attempt to determine the structure or sequence of the product.



For full product information, images and publications, please visit our [website](#).

DATA IMAGES

GTX80134 FCM Image

Flow cytometry analysis of CD52 in patients suffering with Acute Lymphoblastic Leukemia (anti-human CD52 (HI186) (GTX22576); detection by Goat anti-mouse IgG2b PE). CD52 negative pro T ALL (gate leukemic cells)


GTX80134 FCM Image

Flow cytometry analysis of CD52 in patients suffering with Acute Lymphoblastic Leukemia (anti-human CD52 (HI186) (GTX22576); detection by Goat anti-mouse IgG2b PE). CD52 positive cALL (gate leukemic cells)



For full product information, images and publications, please visit our [website](https://www.genetex.com).