

PSMA antibody [GCP-05]

Cat. No. GTX80149

Host	Mouse
Clonality	Monoclonal
Isotype	IgG1
Applications	ICC/IF, FCM, IP, MS
Reactivity	Human

Package
100 µg

Applications

Application Note

*Optimal dilutions/concentrations should be determined by the researcher.

Suggested dilution	Recommended dilution
ICC/IF	Assay dependent
FCM	Assay dependent
IP	Assay dependent
MS	Assay dependent

Not tested in other applications.

Product Note

This antibody recognizes extracellular domain (preferentially in native form) of glutamate carboxypeptidase II (NAALADase, FOLH1, PSMA).

Properties

Form	Liquid
Buffer	PBS
Preservative	15mM Sodium azide
Storage	Store as concentrated solution. Centrifuge briefly prior to opening vial. Store at 4°C. DO NOT FREEZE.
Concentration	1 mg/ml (Please refer to the vial label for the specific concentration.)
Immunogen	amino acids 44-750 of human GCP II
Purification	Protein A purified
Conjugation	Unconjugated

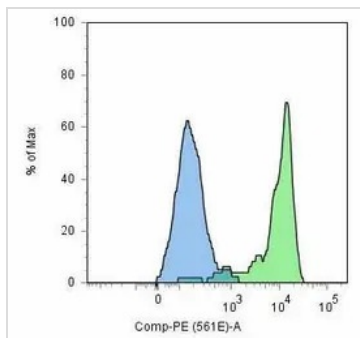
Note

For laboratory research use only. Not for any clinical, therapeutic, or diagnostic use in humans or animals. Not for animal or human consumption.

Purchasers shall not, and agree not to enable third parties to, analyze, copy, reverse engineer or otherwise attempt to determine the structure or sequence of the product.



For full product information, images and publications, please visit our [website](#).

DATA IMAGES

GTX80149 FCM Image

FACS analysis of LNCaP (positive, green) and HeLa (negative, blue) cells using GTX80149 PSMA antibody [GCP-05].



For full product information, images and publications, please visit our [website](https://www.genetex.com).