

## PSMA antibody [GCP-05] (PE)

## Cat. No. GTX80150

<b>Host</b>	Mouse
<b>Clonality</b>	Monoclonal
<b>Isotype</b>	IgG1
<b>Applications</b>	FCM
<b>Reactivity</b>	Human

Package  
100 µg

## Applications

## Application Note

\*Optimal dilutions/concentrations should be determined by the researcher.

Suggested dilution	Recommended dilution
FCM	Assay dependent

Not tested in other applications.

<b>Product Note</b>	This antibody recognizes extracellular domain (preferentially in native form) of glutamate carboxypeptidase II (NAALADase, FOLH1, PSMA).
---------------------	--

## Properties

<b>Form</b>	Liquid
<b>Buffer</b>	PBS
<b>Preservative</b>	15mM Sodium azide
<b>Storage</b>	Store as concentrated solution. Centrifuge briefly prior to opening vial. Store at 4°C. DO NOT FREEZE. Protect from light.
<b>Concentration</b>	0.1 mg/ml (Please refer to the vial label for the specific concentration.)
<b>Immunogen</b>	amino acids 44-750 of human GCPII
<b>Purification</b>	Purified by size-exclusion chromatography
<b>Conjugation</b>	Phycoerythrin (PE) <a href="#">Wavelength</a>

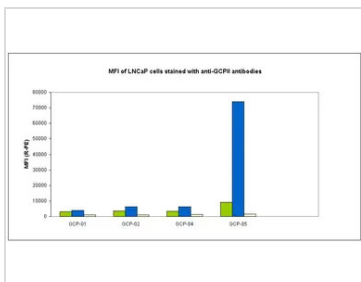
**Note** For laboratory research use only. Not for any clinical, therapeutic, or diagnostic use in humans or animals. Not for animal or human consumption.

Purchasers shall not, and agree not to enable third parties to, analyze, copy, reverse engineer or otherwise attempt to determine the structure or sequence of the product.



For full product information, images and publications, please visit our [website](#).

DATA IMAGES



**GTX80150 FCM Image**

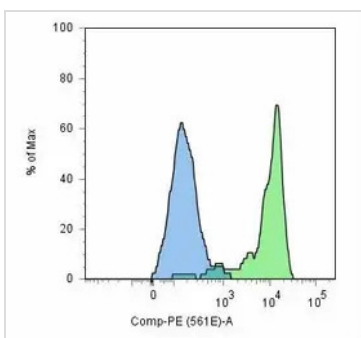
Flow cytometry analysis of GCPII (PSMA) by various monoclonal antibodies: GCP-01, GCP-02, GCP-04, GCP-05 (GTX80149) on LNCaP cell line.

Legend:

green column - 1 µg/ml, LNCaP cell line

blue column - 5 µg/ml, LNCaP cell line

yellow column - negative cell line



**GTX80150 FCM Image**

Flow cytometry analysis of GCPII (PSMA) using anti-GCPII (GCP-05) (GTX80149) and goat anti-mouse-PE on LNCaP cell line (positive, green) and HeLa cells (negative, blue).



For full product information, images and publications, please visit our [website](#).