

PSMA antibody [GCP-04]

Cat. No. GTX80151

Host	Mouse
Clonality	Monoclonal
Isotype	IgG1
Applications	WB, ICC/IF, IHC-P
Reactivity	Human, Mouse, Rat, Pig

References (2)

Package

100 µg

Applications

Application Note

*Optimal dilutions/concentrations should be determined by the researcher.

Suggested dilution	Recommended dilution
WB	Assay dependent
ICC/IF	Assay dependent
IHC-P	Assay dependent

Not tested in other applications.

Calculated MW 84 kDa. ([Note](#))**Product Note**

This antibody recognizes amino acids 100-104 of extracellular domain of denatured glutamate carboxypeptidase II (PSMA, NAALADase, FOLH1).

Properties

Form	Liquid
Buffer	PBS
Preservative	15mM Sodium azide
Storage	Store as concentrated solution. Centrifuge briefly prior to opening vial. Store at 4°C. DO NOT FREEZE.
Concentration	1 mg/ml (Please refer to the vial label for the specific concentration.)
Immunogen	Recombinant fragment of human GCPII (amino acids 44-750) produced in S2 cells
Purification	Protein A purified
Conjugation	Unconjugated



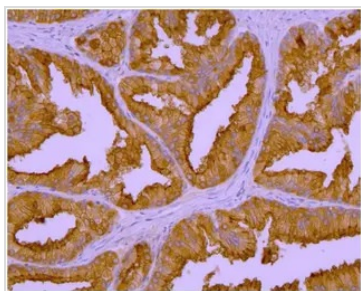
For full product information, images and publications, please visit our [website](#).

For laboratory research use only. Not for any clinical, therapeutic, or diagnostic use in humans or animals. Not for animal or human consumption.

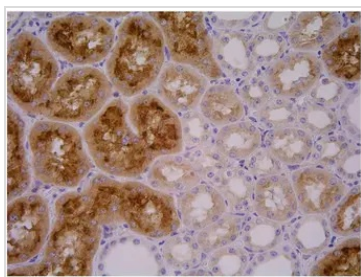
Note

Purchasers shall not, and agree not to enable third parties to, analyze, copy, reverse engineer or otherwise attempt to determine the structure or sequence of the product.

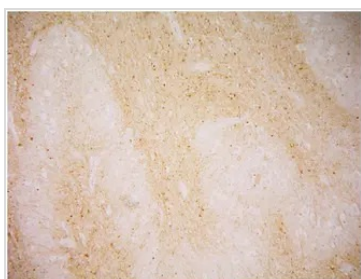
DATA IMAGES

**GTX80151 IHC-P Image**

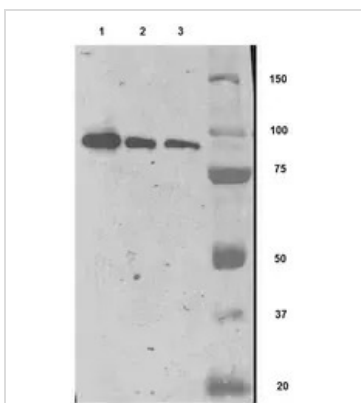
IHC-P analysis of human prostate tissue using GTX80151 PSMA antibody [GCP-04].

**GTX80151 IHC-P Image**

IHC-P analysis of pig kidney tissue using GTX80151 PSMA antibody [GCP-04].

**GTX80151 IHC-P Image**

IHC-P analysis of human medulla oblongata using GTX80151 PSMA antibody [GCP-04].

**GTX80151 WB Image**

WB analysis of human GCPII (aminoacids 44-750) overexpressed in S2 cells using GTX80151 PSMA antibody [GCP-04]. Lanes 1, 2, 3 represent 800, 400 and 200 pg of the protein.



For full product information, images and publications, please visit our [website](#).