

# RP105 antibody [G28-8]

**Cat. No. GTX80152**

<b>Host</b>	Mouse
<b>Clonality</b>	Monoclonal
<b>Isotype</b>	IgG1
<b>Applications</b>	FCM, IP
<b>Reactivity</b>	Human

**Package**  
100 µg

## Applications

### Application Note

\*Optimal dilutions/concentrations should be determined by the researcher.

Suggested dilution	Recommended dilution
FCM	Assay dependent
IP	Assay dependent

Not tested in other applications.

## Properties

<b>Form</b>	Liquid
<b>Buffer</b>	PBS
<b>Preservative</b>	15mM Sodium azide
<b>Storage</b>	Store as concentrated solution. Centrifuge briefly prior to opening vial. Store at 4°C. DO NOT FREEZE.
<b>Concentration</b>	1 mg/ml (Please refer to the vial label for the specific concentration.)
<b>Immunogen</b>	Human tonsillar B cells
<b>Purification</b>	Protein A purified
<b>Conjugation</b>	Unconjugated

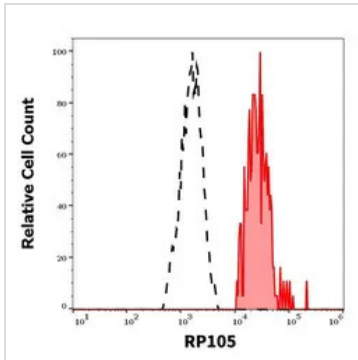
### Note

For laboratory research use only. Not for any clinical, therapeutic, or diagnostic use in humans or animals. Not for animal or human consumption.

Purchasers shall not, and agree not to enable third parties to, analyze, copy, reverse engineer or otherwise attempt to determine the structure or sequence of the product.



For full product information, images and publications, please visit our [website](#).

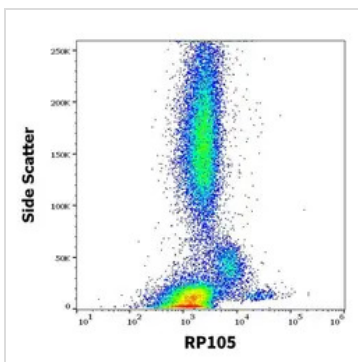
**DATA IMAGES**

**GTX80152 FCM Image**

FCM analysis of surface staining human peripheral blood cells using GTX80152 RP105 antibody [G28-8].

Red line : RP105 positive lymphocytes

Black line : RP105 negative lymphocytes

Dilution : 6 µg/ml


**GTX80152 FCM Image**

FCM analysis of surface staining human peripheral blood cells using GTX80152 RP105 antibody [G28-8].

Dilution : 6 µg/ml



For full product information, images and publications, please visit our [website](http://www.genetex.com).