

## beta Catenin antibody [EM-22]

**Cat. No. GTX80159**

<b>Host</b>	Mouse
<b>Clonality</b>	Monoclonal
<b>Isotype</b>	IgG2a
<b>Applications</b>	WB, ICC/IF, FCM, IP
<b>Reactivity</b>	Human, Mouse, Hamster

**Package**  
100 µg

## Applications

**Application Note**

\*Optimal dilutions/concentrations should be determined by the researcher.

Suggested dilution	Recommended dilution
WB	Assay dependent
ICC/IF	Assay dependent
FCM	Assay dependent
IP	Assay dependent

Not tested in other applications.

**Calculated MW** 86 kDa. ([Note](#))**Product Note** This antibody reacts with C-terminal part of beta-catenin, an 88 kDa multifunctional protein involved both in cell adhesion and in activation of transcription.

## Properties

<b>Form</b>	Liquid
<b>Buffer</b>	PBS
<b>Preservative</b>	15mM Sodium azide
<b>Storage</b>	Store as concentrated solution. Centrifuge briefly prior to opening vial. Store at 4°C. DO NOT FREEZE.
<b>Concentration</b>	1 mg/ml (Please refer to the vial label for the specific concentration.)
<b>Immunogen</b>	Recombinant human beta-catenin
<b>Purification</b>	Protein A purified
<b>Conjugation</b>	Unconjugated



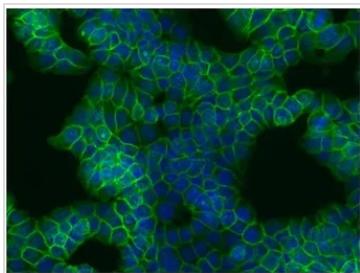
For full product information, images and publications, please visit our [website](#).

For laboratory research use only. Not for any clinical, therapeutic, or diagnostic use in humans or animals. Not for animal or human consumption.

**Note**

Purchasers shall not, and agree not to enable third parties to, analyze, copy, reverse engineer or otherwise attempt to determine the structure or sequence of the product.

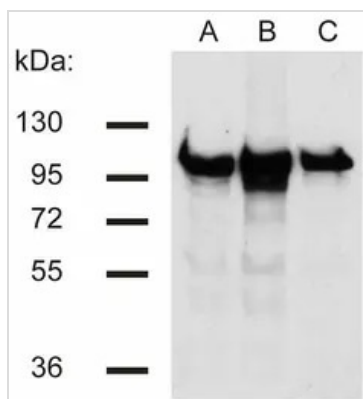
## DATA IMAGES

**GTX80159 ICC/IF Image**

ICC/IF analysis of HT29 cells using GTX80159 beta Catenin antibody [EM-22].

Green : Primary antibody

Blue : DAPI

**GTX80159 WB Image**

WB analysis of 3T3 (A), C57 (B) and KW1 (C) cell lysates using GTX80159 beta Catenin antibody [EM-22].



For full product information, images and publications, please visit our [website](#).