

Prion Protein (PrP) antibody [EM-20]

Cat. No. GTX80160

Host	Mouse
Clonality	Monoclonal
Isotype	IgG2a
Applications	WB
Reactivity	Human

Package
100 µg

Applications

Application Note

*Optimal dilutions/concentrations should be determined by the researcher.

Suggested dilution	Recommended dilution
WB	Assay dependent

Not tested in other applications.

Product Note

This antibody is suitable for discrimination between normal cellular prion protein (PrP^c) and its conformationally changed form (PrP^{Sc}) prion protein.

Properties

Form	Liquid
Buffer	PBS
Preservative	15mM Sodium azide
Storage	Store as concentrated solution. Centrifuge briefly prior to opening vial. Store at 4°C. DO NOT FREEZE.
Concentration	1 mg/ml (Please refer to the vial label for the specific concentration.)
Immunogen	Recombinant human prion protein
Purification	Protein A purified
Conjugation	Unconjugated

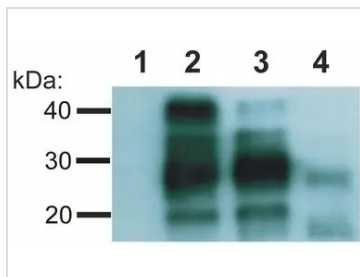
Note

For laboratory research use only. Not for any clinical, therapeutic, or diagnostic use in humans or animals. Not for animal or human consumption.

Purchasers shall not, and agree not to enable third parties to, analyze, copy, reverse engineer or otherwise attempt to determine the structure or sequence of the product.



For full product information, images and publications, please visit our [website](#).

DATA IMAGES

GTx80160 WB Image

WB analysis of Creutzfeld-Jakob disease (CJD) negative (lane 1, 2) and CJD positive (lane 3, 4) human brain material using GTx80160 Prion Protein (PrP) antibody [EM-20]. CJD positive patient has proteinase K resistant prion protein.

Lane 1, 4 : With proteinase K treatment

Lane 2, 3 : Without proteinase K treatment



For full product information, images and publications, please visit our [website](https://www.genetex.com).