

EGFR (phospho Tyr1173) antibody [EM-13]

Cat. No. GTX80161

Host	Mouse
Clonality	Monoclonal
Isotype	IgG1
Application	WB, FACS, IP
Reactivity	Human

Package
100 µg

APPLICATION

Application Note

*Optimal dilutions/concentrations should be determined by the researcher.

Suggested dilution	Recommended dilution
WB	Assay dependent
FACS	Assay dependent
IP	Assay dependent

Not tested in other applications.

Calculated MW 134 kDa. ([Note](#))

Product Note The full-length EGFR includes the 24 aa signal peptide that is cleaved during EGFR maturation. The Tyr1173 of mature EGFR is equivalent to Tyr1197 of uncleaved EGFR.

PROPERTIES

Form	Liquid
Buffer	PBS
Preservative	15mM Sodium azide
Storage	Store as concentrated solution. Centrifuge briefly prior to opening vial. Store at 4°C. DO NOT FREEZE.
Concentration	1 mg/ml (Please refer to the vial label for the specific concentration.)
Immunogen	Synthetic phospho-peptide covering sequence around tyrosine 1173 of human EGFR.
Purification	Protein A purified
Conjugation	Unconjugated

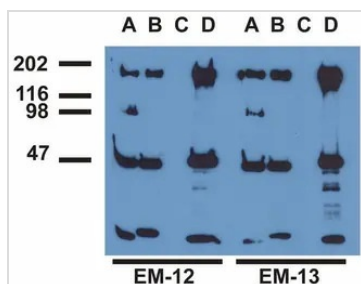


For full product information, images and publications, please visit our [website](#).

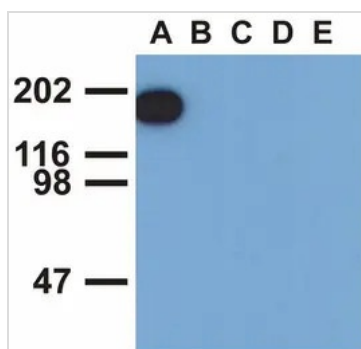
For laboratory research use only. Not for any clinical, therapeutic, or diagnostic use in humans or animals. Not for animal or human consumption.

Note

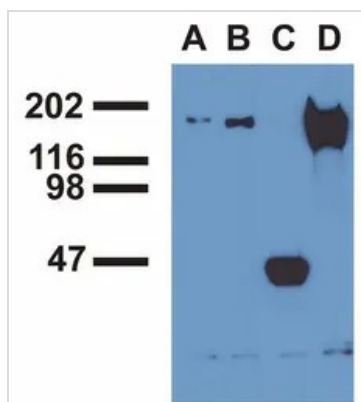
Purchasers shall not, and agree not to enable third parties to, analyze, copy, reverse engineer or otherwise attempt to determine the structure or sequence of the product.

DATA IMAGES

GTX80161 IP Image

IP analysis of EGF-treated A431 cells using phosphospecific EGFR antibodies ,GTX80162 (A), GTX80161 (B) , a commercial anti-EGFR polyclonal antibody(C), and anti-EGFR monoclonal mAb108 (D). The precipitates were immunoblotted with GTX80162 EGFR (phospho Tyr992) antibody [EM-12] or GTX80161 EGFR (phospho Tyr1173) antibody [EM-13] antibody.


GTX80161 WB Image

WB analysis of EGF-treated A431 (A), CALU-3 (B), MCF-7 (C), Jurkat (D) and Ramos (E) cell lines using GTX80161 EGFR (phospho Tyr1173) antibody [EM-13].


GTX80161 IP Image

IP analysis of EGF-treated A431 cells using phosphospecific EGFR antibodies GTX80162(A), GTX80161(B) , a commercial anti-EGFR polyclonal antibody(C), and anti-EGFR monoclonal mAb108 (D). The precipitates were immunoblotted with a commercial anti-EGFR polyclonal antibody.



For full product information, images and publications, please visit our [website](https://www.genetex.com).