

Mouse Anti-Human IgG (Fc) antibody [EM-07] (FITC)

Cat. No. GTX80166

Host	Mouse
Clonality	Monoclonal
Isotype	IgG1
Applications	WB, FCM
Reactivity	Human

Package
100 µg

Applications

Application Note

*Optimal dilutions/concentrations should be determined by the researcher.

Suggested dilution	Recommended dilution
WB	Assay dependent
FCM	Assay dependent

Not tested in other applications.

Product Note This antibody reacts with Fc part of human IgG heavy chain and with isolated Fc fragments.

Properties

Form	Liquid
Buffer	PBS
Preservative	15mM Sodium azide
Storage	Store as concentrated solution. Centrifuge briefly prior to opening vial. Store at 4°C. DO NOT FREEZE. Protect from light.
Concentration	0.1 mg/ml (Please refer to the vial label for the specific concentration.)
Immunogen	Fusion protein of human IgG Fc fragment.
Purification	Purified by size-exclusion chromatography
Conjugation	Fluorescein isothiocyanate (FITC) Wavelength

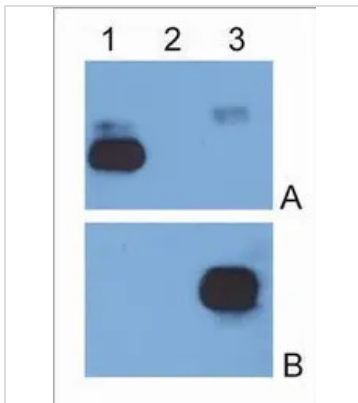
Note For laboratory research use only. Not for any clinical, therapeutic, or diagnostic use in humans or animals. Not for animal or human consumption.

Purchasers shall not, and agree not to enable third parties to, analyze, copy, reverse engineer or otherwise attempt to determine the structure or sequence of the product.



For full product information, images and publications, please visit our [website](#).

DATA IMAGES

**GTX80166 WB Image**

IgG κ light chain (1), IgG λ light chain (2) and IgG Fc fragment (3) purified from human serum were analysed by Western blotting with MEM-09 antibody against IgG κ light chain (A) and EM-07 antibody against IgG Fc fragment (B).



For full product information, images and publications, please visit our [website](#).