

## STIM1 antibody [CDN3H4]

Cat. No. GTX80195

Host	Mouse
Clonality	Monoclonal
Isotype	IgG1
Applications	WB, ICC/IF, IHC-P, IP
Reactivity	Human, Mouse, Rat

Package  
100 µg

## Applications

## Application Note

\*Optimal dilutions/concentrations should be determined by the researcher.

Suggested dilution	Recommended dilution
WB	Assay dependent
ICC/IF	Assay dependent
IHC-P	Assay dependent
IP	Assay dependent

Not tested in other applications.

Calculated MW 77 kDa. ( [Note](#) )

## Properties

Form	Liquid
Buffer	PBS
Preservative	15mM Sodium azide
Storage	Store as concentrated solution. Centrifuge briefly prior to opening vial. Store at 4°C. DO NOT FREEZE.
Concentration	1 mg/ml (Please refer to the vial label for the specific concentration.)
Immunogen	Synthesized peptide (C-terminal cytoplasmic part of STIM1).
Purification	Protein A purified
Conjugation	Unconjugated

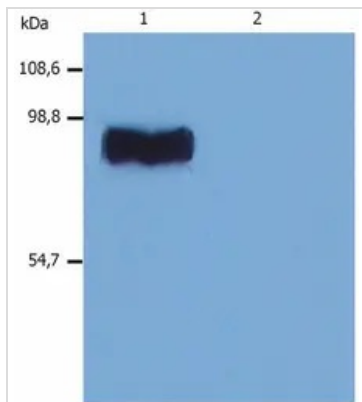
## Note

For laboratory research use only. Not for any clinical, therapeutic, or diagnostic use in humans or animals. Not for animal or human consumption.

Purchasers shall not, and agree not to enable third parties to, analyze, copy, reverse engineer or otherwise attempt to determine the structure or sequence of the product.

For full product information, images and publications, please visit our [website](#).

## DATA IMAGES

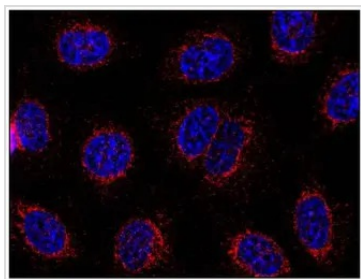


### GTx80195 WB Image

WB analysis of RBL cell lysates (non-reducing) using GTx80195 STIM1 antibody [CDN3H4].

Lane 1 : GTx80195

Lane 2 : mouse IgG1 isotype control



### GTx80195 ICC/IF Image

ICC/IF analysis of methanol-aceton fixed HeLa cells using GTx80195 STIM1 antibody [CDN3H4].

Red : Primary antibody

Blue : DAPI



For full product information, images and publications, please visit our [website](https://www.genetex.com).