

C-Peptide antibody [C-PEP-01] (Biotin)

Cat. No. GTX80204

| | |
|---------------------|---------------------------|
| Host | Mouse |
| Clonality | Monoclonal |
| Isotype | IgG1 |
| Applications | ICC/IF, IHC-P, ELISA, RIA |
| Reactivity | Human |

References (1)

Package

100 µg

Applications

Application Note

*Optimal dilutions/concentrations should be determined by the researcher.

| Suggested dilution | Recommended dilution |
|--------------------|----------------------|
| ICC/IF | Assay dependent |
| IHC-P | Assay dependent |
| ELISA | Assay dependent |
| RIA | Assay dependent |

Not tested in other applications.

Product Note

This antibody reacts specifically with C-peptide, a part of the Proinsulin molecule. No cross-reactivity with Insulin or other peptide hormones or proteins was observed.

Properties

| | |
|----------------------|--|
| Form | Liquid |
| Buffer | PBS |
| Preservative | 15mM Sodium azide |
| Storage | Store as concentrated solution. Centrifuge briefly prior to opening vial. Store at 4°C. DO NOT FREEZE. |
| Concentration | 1 mg/ml (Please refer to the vial label for the specific concentration.) |
| Immunogen | Human C-peptide conjugated to bovine serum albumin. |
| Purification | Purified IgG |
| Conjugation | Biotin The reagent is free of unconjugated biotin. |



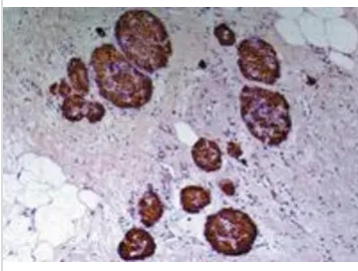
For full product information, images and publications, please visit our [website](#).

For laboratory research use only. Not for any clinical, therapeutic, or diagnostic use in humans or animals. Not for animal or human consumption.

Note

Purchasers shall not, and agree not to enable third parties to, analyze, copy, reverse engineer or otherwise attempt to determine the structure or sequence of the product.

DATA IMAGES

**GTX80204 IHC-P Image**

Immunohistochemistry staining of human pancreas (paraffin-embedded sections) with anti-human to C-peptide of Proinsulin (C-PEP-01).



For full product information, images and publications, please visit our [website](#).