

pan Cytokeratin antibody [C-11] (APC)

Cat. No. GTX80205

Host	Mouse
Clonality	Monoclonal
Isotype	IgG1
Applications	WB, ICC/IF, FCM
Reactivity	Human, Mouse, Rat, Guinea pig

References (15)

Package

100 µg

Applications

Application Note

*Optimal dilutions/concentrations should be determined by the researcher.

Suggested dilution	Recommended dilution
WB	Assay dependent
ICC/IF	Assay dependent
FCM	Assay dependent

Not tested in other applications.

Product Note This antibody reacts with Cytokeratin peptides 4, 5, 6, 8, 10, 13, 18.

Properties

Form	Liquid
Buffer	PBS
Preservative	15mM Sodium azide
Storage	Store as concentrated solution. Centrifuge briefly prior to opening vial. Store at 4°C. DO NOT FREEZE. Protect from light.
Concentration	0.1 mg/ml (Please refer to the vial label for the specific concentration.)
Immunogen	Keratin-enriched preparation from human epidermoid carcinoma cell line A431.
Purification	Purified by size-exclusion chromatography
Conjugation	Allophycocyanin (APC) Wavelength

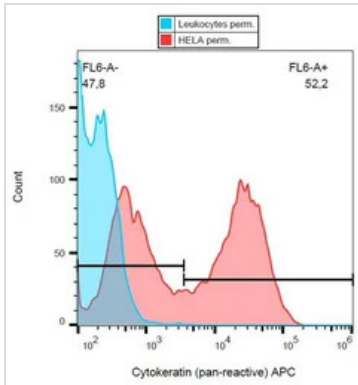
Note

For laboratory research use only. Not for any clinical, therapeutic, or diagnostic use in humans or animals. Not for animal or human consumption.

Purchasers shall not, and agree not to enable third parties to, analyze, copy, reverse engineer or otherwise attempt to determine the structure or sequence of the product.



For full product information, images and publications, please visit our [website](#).

DATA IMAGES

GTX80205 FCM Image

FACS (intracellular staining) analysis of HeLa cells using GTX80205 pan Cytokeratin antibody [C-11] (APC).



For full product information, images and publications, please visit our [website](#).