

Cytokeratin 18 antibody [C-04] (FITC)

Cat. No. GTX80207

Host	Mouse
Clonality	Monoclonal
Isotype	IgG1
Application	IHC-P, FACS
Reactivity	Human, Mouse, Rat

Reference (1)
Package
100 µg

APPLICATION

Application Note

*Optimal dilutions/concentrations should be determined by the researcher.

Suggested dilution	Recommended dilution
IHC-P	Assay dependent
FACS	Assay dependent

Not tested in other applications.

Calculated MW 48 kDa. ([Note](#))

PROPERTIES

Form	Liquid
Buffer	PBS
Preservative	15mM Sodium azide
Storage	Store as concentrated solution. Centrifuge briefly prior to opening vial. Store at 4°C. DO NOT FREEZE. Protect from light.
Concentration	0.1 mg/ml (Please refer to the vial label for the specific concentration.)
Immunogen	Cytoskeleton preparation of epidermal carcinoma cell line A431.
Purification	Purified by size-exclusion chromatography
Conjugation	Fluorescein isothiocyanate (FITC)

Note

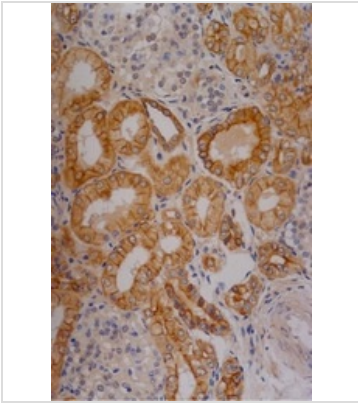
For laboratory research use only. Not for any clinical, therapeutic, or diagnostic use in humans or animals. Not for animal or human consumption.

Purchasers shall not, and agree not to enable third parties to, analyze, copy, reverse engineer or otherwise attempt to determine the structure or sequence of the product.



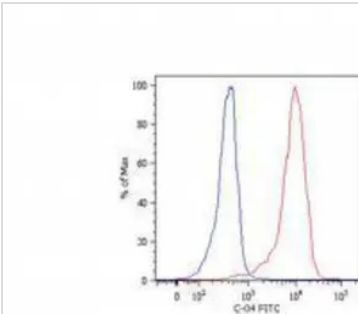
For full product information, images and publications, please visit our [website](#).

DATA IMAGES



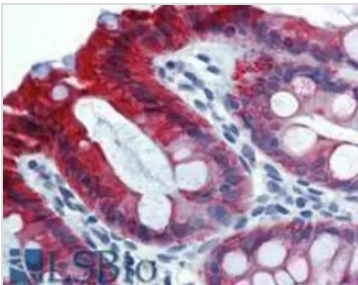
GTX80207 IHC-P Image

Immunohistochemistry staining of human kidney (paraffin-embedded sections) with anti-Cytokeratin 18 (C-04).



GTX80207 FACS Image

Intracellular flow cytometry analysis of cytochrome expression in HeLa human cervix carcinoma cell line using anti-Cytokeratin 18 (C-04) FITC. Overlay with Isotype mouse IgG1 control (PPV-06).



GTX80207 IHC-P Image

Immunohistochemistry staining of human colon (paraffin-embedded sections) with anti-Cytokeratin 18 (C-04).



For full product information, images and publications, please visit our [website](https://www.genetex.com).