

CD86 antibody [BU63] (PE)

Cat. No. GTX80211

Host	Mouse
Clonality	Monoclonal
Isotype	IgG1
Applications	FCM
Reactivity	Human, Dog

References (5)

Package

100 test

Applications

Application Note

*Optimal dilutions/concentrations should be determined by the researcher.

Suggested dilution	Recommended dilution
FCM	20 µl reagent / 100 µl of whole blood or 10 ⁶ cells in a suspension

Note : Do not need a permeabilization step.

Not tested in other applications.

Product Note

Domain depletion epitope mapping studies indicate that the binding site of Mouse anti Human CD86, clone Bu63 is located within the Ig-v-like domain of human CD86 (Jeanin et al. 1997).

Properties

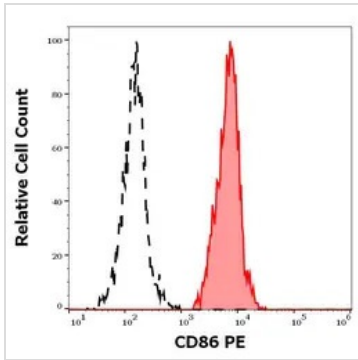
Form	Liquid
Buffer	PBS
Preservative	15mM Sodium azide
Storage	Store as concentrated solution. Centrifuge briefly prior to opening vial. Store at 4°C. DO NOT FREEZE. Protect from light.
Concentration	Batch dependent (Please refer to the vial label for the specific concentration.)
Immunogen	B-lymphoblastoid cell line ARH 77
Purification	Purified by size-exclusion chromatography
Conjugation	Phycoerythrin (PE) Wavelength

Note

For laboratory research use only. Not for any clinical, therapeutic, or diagnostic use in humans or animals. Not for animal or human consumption.

Purchasers shall not, and agree not to enable third parties to, analyze, copy, reverse engineer or otherwise attempt to determine the structure or sequence of the product.

For full product information, images and publications, please visit our [website](#).

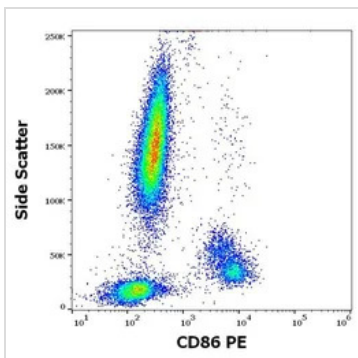
DATA IMAGES

GTX80211 FCM Image

FCM analysis of surface staining human peripheral whole blood separation using GTX80211 CD86 antibody [BU63] (PE).

Red-filled : monocytes

Black-dashed : lymphocytes

Dilution : 0.56 µg/ml


GTX80211 FCM Image

FCM analysis of surface staining human peripheral whole blood using GTX80211 CD86 antibody [BU63] (PE).

Dilution : 0.56 µg/ml



For full product information, images and publications, please visit our [website](#).