

BRG1 antibody [BRG-01]

Cat. No. GTX80217

Host	Mouse
Clonality	Monoclonal
Isotype	IgG2a
Applications	WB
Reactivity	Human

References (1)

Package

100 µg

Applications

Application Note

*Optimal dilutions/concentrations should be determined by the researcher.

Suggested dilution	Recommended dilution
WB	Assay dependent

Not tested in other applications.

Calculated MW 185 kDa. ([Note](#))

Product Note This antibody recognizes an epitope within C-terminal part of human Brg1, a 205 kDa catalytic subunit of SWI2/SNF2-family chromatin-remodeling complexes.

Properties

Form	Liquid
Buffer	PBS
Preservative	15mM Sodium azide
Storage	Store as concentrated solution. Centrifuge briefly prior to opening vial. Store at 4°C. DO NOT FREEZE.
Concentration	1 mg/ml (Please refer to the vial label for the specific concentration.)
Immunogen	Bacterially produced GST-fused protein representing 242 C-terminal amino acids of human Brg1.
Purification	Protein A purified
Conjugation	Unconjugated

Note

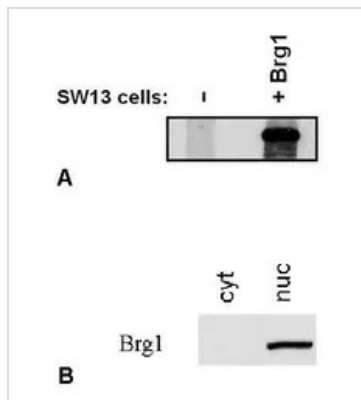
For laboratory research use only. Not for any clinical, therapeutic, or diagnostic use in humans or animals. Not for animal or human consumption.

Purchasers shall not, and agree not to enable third parties to, analyze, copy, reverse engineer or otherwise attempt to determine the structure or sequence of the product.



For full product information, images and publications, please visit our [website](#).

DATA IMAGES



GTX80217 WB Image

WB analysis of various samples using GTX80217 BRG1 antibody [BRG-01].

Panel A : Brg1-negative SW13 cells transfected with Brg1

Panel B : HEK293 cytoplasmic (cyt) and nuclear (nuc) lysates



For full product information, images and publications, please visit our [website](https://www.genetex.com).