

## ARAP1 antibody [ARAP1-2]

Cat. No. GTX80235

Host	Mouse
Clonality	Monoclonal
Isotype	IgG1
Applications	WB, ICC/IF, IP
Reactivity	Human

Package  
100 µg

## Applications

## Application Note

\*Optimal dilutions/concentrations should be determined by the researcher.

Suggested dilution	Recommended dilution
WB	Assay dependent
ICC/IF	Assay dependent
IP	Assay dependent

Not tested in other applications.

**Calculated MW** 162 kDa. ([Note](#))

**Product Note** This antibody reacts with C-terminal part of ARAP1, a 160 kDa adaptor protein.

## Properties

Form	Liquid
Buffer	PBS
Preservative	15mM Sodium azide
Storage	Store as concentrated solution. Centrifuge briefly prior to opening vial. Store at 4°C. DO NOT FREEZE.
Concentration	1 mg/ml (Please refer to the vial label for the specific concentration.)
Immunogen	His6-tagged protein corresponding to amino acids 1190-1450 of human ARAP1
Purification	Protein A purified
Conjugation	Unconjugated

## Note

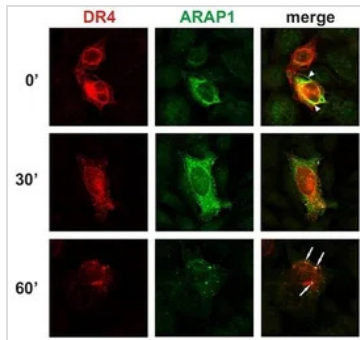
For laboratory research use only. Not for any clinical, therapeutic, or diagnostic use in humans or animals. Not for animal or human consumption.

Purchasers shall not, and agree not to enable third parties to, analyze, copy, reverse engineer or otherwise attempt to determine the structure or sequence of the product.



For full product information, images and publications, please visit our [website](#).

## DATA IMAGES



### GTx80235 ICC/IF Image

ICC/IF analysis of methanol-fixed, ARAP1-transfected NCTC cells treated with TRAIL for 0', 30' or 60' using GTx80235 ARAP1 antibody [ARAP1-2]. Arrowheads show ARAP1-DR4 colocalization at the plasma membrane and intracellular membranes, whereas arrows show their colocalization in early endosomes.

Red : DR4

Green : GTx80235



For full product information, images and publications, please visit our [website](#).