

Albumin antibody [AL-01] (Biotin)

Cat. No. GTX80238

Host	Mouse
Clonality	Monoclonal
Isotype	IgG1
Applications	WB, IHC-P, ELISA, RIA
Reactivity	Human

References (1)

Package

100 µg

Applications

Application Note

*Optimal dilutions/concentrations should be determined by the researcher.

Suggested dilution	Recommended dilution
WB	Assay dependent
IHC-P	Assay dependent
ELISA	Assay dependent
RIA	Assay dependent

Not tested in other applications.

Calculated MW 69 kDa. ([Note](#))**Product Note**

This antibody reacts only with human serum albumin, a 65-67 kDa monomeric protein in human blood plasma; it is produced in liver. No cross-reactivity was observed with other serum proteins.
We do not recommend use of this product for Mouse,Rabbit,Bovine,Pig samples.

Properties

Form	Liquid
Buffer	PBS
Preservative	15mM Sodium azide
Storage	Store as concentrated solution. Centrifuge briefly prior to opening vial. Store at 4°C. DO NOT FREEZE.
Concentration	1 mg/ml (Please refer to the vial label for the specific concentration.)
Immunogen	Fraction of proteins containing albumin after ammonium sulphate precipitation and DEAE-chromatography of human serum.
Purification	Purified IgG
Conjugation	Biotin The reagent is free of unconjugated biotin.



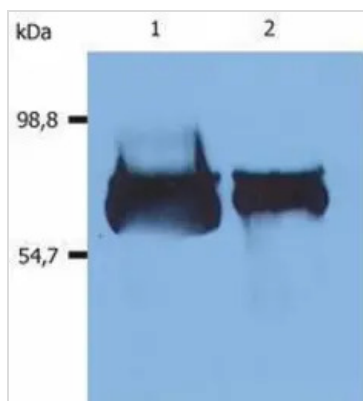
For full product information, images and publications, please visit our [website](#).

For laboratory research use only. Not for any clinical, therapeutic, or diagnostic use in humans or animals. Not for animal or human consumption.

Note

Purchasers shall not, and agree not to enable third parties to, analyze, copy, reverse engineer or otherwise attempt to determine the structure or sequence of the product.

DATA IMAGES

**GTX80238 WB Image**

Western Blotting analysis (reducing conditions) of human serum albumin using anti-human Albumin (AL-01). Lane 1: Human blood plasma. Lane 2: Human blood serum



For full product information, images and publications, please visit our [website](#).