

AGR2+AGR3 antibody [AGR3.4]

Cat. No. GTX80239

Host	Mouse
Clonality	Monoclonal
Isotype	IgG1
Applications	WB, ICC/IF, IHC-P
Reactivity	Human

Package
100 µg

Applications

Application Note

*Optimal dilutions/concentrations should be determined by the researcher.

Suggested dilution	Recommended dilution
WB	Assay dependent
ICC/IF	Assay dependent
IHC-P	Assay dependent

Not tested in other applications.

Product Note

This antibody recognizes the PLMII epitope of AGR3 (AG3) and AGR2 (AG2) proteins (19-20 kDa); secreted cytoplasmic proteins which can serve as markers of carcinogenesis.

Properties

Form	Liquid
Buffer	PBS
Preservative	15mM Sodium azide
Storage	Store as concentrated solution. Centrifuge briefly prior to opening vial. Store at 4°C. DO NOT FREEZE.
Concentration	1 mg/ml (Please refer to the vial label for the specific concentration.)
Immunogen	Purified human AGR3 protein
Purification	Protein A purified
Conjugation	Unconjugated

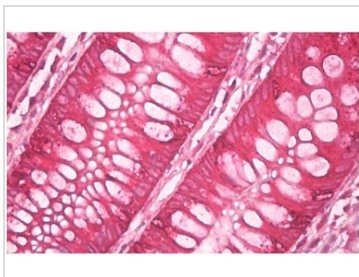
Note

For laboratory research use only. Not for any clinical, therapeutic, or diagnostic use in humans or animals. Not for animal or human consumption.

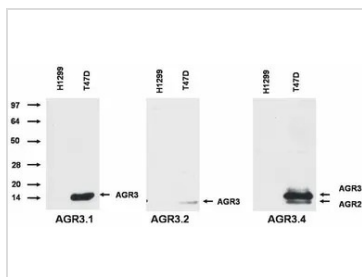
Purchasers shall not, and agree not to enable third parties to, analyze, copy, reverse engineer or otherwise attempt to determine the structure or sequence of the product.



For full product information, images and publications, please visit our [website](#).

DATA IMAGES

GTX80239 IHC-P Image

IHC-P analysis of human colon tissue using GTX80239 AGR2+AGR3 antibody [AGR3.4].


GTX80239 WB Image

WB analysis of T47D and H1229 cell lysate using GTX80239 AGR2+AGR3 antibody [AGR3.4].



For full product information, images and publications, please visit our [website](#).