

CCDC98 antibody [ABRA1-01]

Cat. No. GTX80242

Host	Mouse
Clonality	Monoclonal
Isotype	IgG
Applications	WB, FCM, IP
Reactivity	Human

Package
100 µg

Applications

Application Note

*Optimal dilutions/concentrations should be determined by the researcher.

Suggested dilution	Recommended dilution
WB	Assay dependent
FCM	Assay dependent
IP	Assay dependent

Not tested in other applications.

Calculated MW 47 kDa. ([Note](#))**Product Note** This antibody recognizes N-terminal part of ABRA1 (Abraxas, CCDC98).

Properties

Form	Liquid
Buffer	PBS
Preservative	15mM Sodium azide
Storage	Store as concentrated solution. Centrifuge briefly prior to opening vial. Store at 4°C. DO NOT FREEZE.
Concentration	1 mg/ml (Please refer to the vial label for the specific concentration.)
Immunogen	Recombinant protein corresponding to amino acids 1-313 of ABRA1 with N-terminal His6 tag
Purification	Protein A purified
Conjugation	Unconjugated

Note

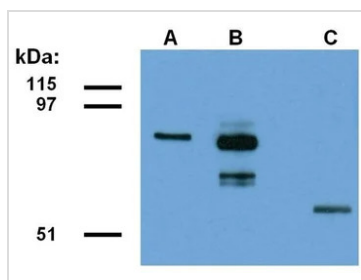
For laboratory research use only. Not for any clinical, therapeutic, or diagnostic use in humans or animals. Not for animal or human consumption.

Purchasers shall not, and agree not to enable third parties to, analyze, copy, reverse engineer or otherwise attempt to determine the structure or sequence of the product.



For full product information, images and publications, please visit our [website](#).

DATA IMAGES



GTX80242 WB Image

WB analysis of ABRA1-EGFP transfected HEK293 cell lysate using GTX80242 CCDC98 antibody [ABRA1-01].

Lane A : GTX80242

Lane B : anti-EGFP (polyclonal)

Lane C : GTX27750



For full product information, images and publications, please visit our [website](https://www.genetex.com).