

# Mouse Anti-Human kappa light chain antibody [A8B5] (FITC)

**Cat. No. GTX80244**

<b>Host</b>	Mouse
<b>Clonality</b>	Monoclonal
<b>Isotype</b>	IgG1
<b>Application</b>	FACS
<b>Reactivity</b>	Human

**Package**  
100 test

## APPLICATION

### Application Note

\*Optimal dilutions/concentrations should be determined by the researcher.

Suggested dilution	Recommended dilution
FACS	20 µl reagent / 100 µl of whole blood or 10 <sup>6</sup> cells in a suspension
Not tested in other applications.	

**Product Note** We do not recommend use of this product for Rabbit,Goat,Sheep,Hamster,Guinea pig samples.

## PROPERTIES

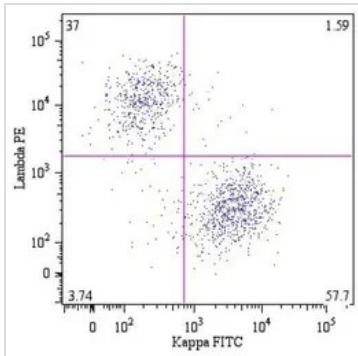
<b>Form</b>	Liquid
<b>Buffer</b>	PBS
<b>Preservative</b>	15mM Sodium azide
<b>Storage</b>	Store as concentrated solution. Centrifuge briefly prior to opening vial. Store at 4°C. DO NOT FREEZE. Protect from light.
<b>Concentration</b>	Batch dependent (Please refer to the vial label for the specific concentration.)
<b>Purification</b>	Purified by size-exclusion chromatography
<b>Conjugation</b>	Fluorescein isothiocyanate (FITC)

**Note** For laboratory research use only. Not for any clinical, therapeutic, or diagnostic use in humans or animals. Not for animal or human consumption.

Purchasers shall not, and agree not to enable third parties to, analyze, copy, reverse engineer or otherwise attempt to determine the structure or sequence of the product.



For full product information, images and publications, please visit our [website](#).

**DATA IMAGES**

**GTx80244 FACS Image**

FACS analysis of B lymphocytes (CD19+) using GTX28331 CD19 antibody [LT19] detected by GTX80244 Human kappa Light chain antibody [A8B5] (FITC) and GTX80281 Human lambda light chain antibody [4C2] (PE).



For full product information, images and publications, please visit our [website](#).