

PSA antibody [A67-B/E3] (Biotin)

Cat. No. GTX80247

Host	Mouse
Clonality	Monoclonal
Isotype	IgG1
Applications	WB, IHC-P, ELISA
Reactivity	Human

Package
100 µg

Applications

Application Note

*Optimal dilutions/concentrations should be determined by the researcher.

Suggested dilution	Recommended dilution
WB	Assay dependent
IHC-P	Assay dependent
ELISA	Assay dependent

Not tested in other applications.

Calculated MW 29 kDa. ([Note](#))

Properties

Form	Liquid
Buffer	PBS
Preservative	15mM Sodium azide
Storage	Store as concentrated solution. Centrifuge briefly prior to opening vial. Store at 4°C. DO NOT FREEZE.
Concentration	1 mg/ml (Please refer to the vial label for the specific concentration.)
Immunogen	30 KDa protein fraction prepared from human seminal plasma
Purification	Purified IgG
Conjugation	Biotin The reagent is free of unconjugated biotin.

Note

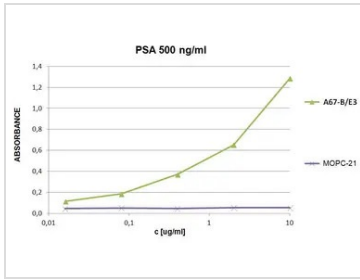
For laboratory research use only. Not for any clinical, therapeutic, or diagnostic use in humans or animals. Not for animal or human consumption.

Purchasers shall not, and agree not to enable third parties to, analyze, copy, reverse engineer or otherwise attempt to determine the structure or sequence of the product.



For full product information, images and publications, please visit our [website](#).

DATA IMAGES



GTX80247 ELISA Image

ELISA analysis of PSA protein using GTX80247 PSA antibody [A67-B/E3] (Biotin).



For full product information, images and publications, please visit our [website](#).