

HLA-G antibody [87G] (Biotin)

Cat. No. GTX80253

Host	Mouse
Clonality	Monoclonal
Isotype	IgG2a
Applications	WB, IHC-Fr, FCM, ELISA
Reactivity	Human

References (1)

Package

100 µg

Applications

Application Note

*Optimal dilutions/concentrations should be determined by the researcher.

Suggested dilution	Recommended dilution
WB	Assay dependent
IHC-Fr	Assay dependent
FCM	Assay dependent
ELISA	Assay dependent

Not tested in other applications.

Calculated MW 38 kDa. ([Note](#))

Product Note

This antibody recognizes both membrane-bound and soluble forms of HLA-G (HLA-G1 and HLA-G5). The antibody 87G blocks interaction of HLA-G with inhibitory receptors.
We do not recommend use of this product for Mouse,Rat samples.

Properties

Form	Liquid
Buffer	PBS
Preservative	15mM Sodium azide
Storage	Store as concentrated solution. Centrifuge briefly prior to opening vial. Store at 4°C. DO NOT FREEZE.
Concentration	1 mg/ml (Please refer to the vial label for the specific concentration.)
Immunogen	HLA-B27 transgenic mice were immunized with H-2 identical murine cells transfected with and expressing genes encoding HLA-G and human beta2-microglobulin.
Purification	Purified IgG
Conjugation	Biotin The reagent is free of unconjugated biotin.



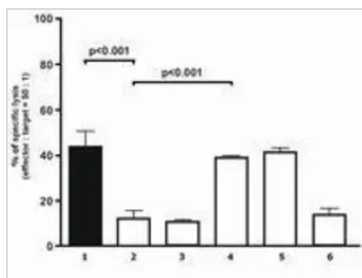
For full product information, images and publications, please visit our [website](#).

For laboratory research use only. Not for any clinical, therapeutic, or diagnostic use in humans or animals. Not for animal or human consumption.

Note

Purchasers shall not, and agree not to enable third parties to, analyze, copy, reverse engineer or otherwise attempt to determine the structure or sequence of the product.

DATA IMAGES



GTx80253 WB Image

Analysis of cytolytical activity of human polyclonal NK cells on target melanoma cells. Blocking of HLA-G1 on transfectants with anti-human HLA-G (87G) restored specific lysis. Target cells: M8 cell line transfected with empty vector (column 1) and with HLA-G1 cDNA (columns 2-6). Blocking antibodies: Column 1-2: none Column 3: Isotype mouse IgG2a control Column 4: anti-human HLA-G (87G) purified Column 5: anti-human HLA-G (87G) F(ab')2 fragment Column 6: anti-human HLA-G (MEM-G/9)



For full product information, images and publications, please visit our [website](#).