

## PKA C alpha antibody [6D2.1]

Cat. No. GTX80257

Host	Mouse
Clonality	Monoclonal
Isotype	IgG1
Applications	WB, Dot
Reactivity	Human

**Package**  
100 µg

## Applications

## Application Note

\*Optimal dilutions/concentrations should be determined by the researcher.

Suggested dilution	Recommended dilution
WB	Assay dependent
Dot	Assay dependent

Not tested in other applications.

**Calculated MW** 41 kDa. ( [Note](#) )**Product Note** This antibody reacts with human protein kinase A catalytic (PKAc) alpha subunit, and weakly with PKAc gamma subunit (both around 40 kDa).

## Properties

Form	Liquid
Buffer	PBS
Preservative	15mM Sodium azide
Storage	Store as concentrated solution. Centrifuge briefly prior to opening vial. Store at 4°C. DO NOT FREEZE.
Concentration	1 mg/ml (Please refer to the vial label for the specific concentration.)
Immunogen	Peptide corresponding to amino acids ESPAQNTAHLQFERIK of human protein kinase A c alpha (PKAc alpha).
Purification	Protein A purified
Conjugation	Unconjugated

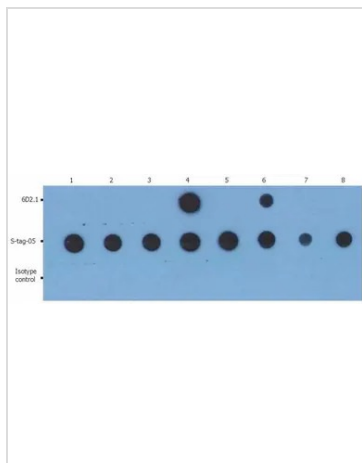
## Note

For laboratory research use only. Not for any clinical, therapeutic, or diagnostic use in humans or animals. Not for animal or human consumption.

Purchasers shall not, and agree not to enable third parties to, analyze, copy, reverse engineer or otherwise attempt to determine the structure or sequence of the product.



For full product information, images and publications, please visit our [website](#).

**DATA IMAGES**

**GTx80257 Dot Image**

Dot blot analysis of GST and GST-fusion proteins using GTx80257 PKA C alpha antibody [6D2.1] and GTx79895 GST tag antibody [S-tag-05]. The total amount of material spotted on the nitrocellulose membrane is 5 ng/spot.

Lane 1 : GST-Akt1

Lane 2 : GST-Akt2

Lane 3 : GST-Akt3

Lane 4 : GST-PKAc alpha

Lane 5 : GST-PKAc beta

Lane 6 : GST-PKAc gamma

Lane 7 : GST-MEK 1

Lane 8 : GST



For full product information, images and publications, please visit our [website](https://www.genetex.com).