

HLA-G antibody [5A6G7] (Biotin)

Cat. No. GTX80261

Host	Mouse
Clonality	Monoclonal
Isotype	IgG1
Applications	WB, ICC/IF, IHC-P, IHC-Fr, FCM, ELISA
Reactivity	Human

Package
100 µg

Applications

Application Note

*Optimal dilutions/concentrations should be determined by the researcher.

Suggested dilution	Recommended dilution
WB	Assay dependent
ICC/IF	Assay dependent
IHC-P	Assay dependent
IHC-Fr	Assay dependent
FCM	Assay dependent
ELISA	Assay dependent

Not tested in other applications.

Calculated MW 38 kDa. ([Note](#))

Product Note

The antibody 5A6G7 was generated to a peptide corresponding to C-intron 4-encoded sequence. This antibody does not crossreact with the full-length HLA-G1 isoform and thus allow to distinguish between secreted HLA-G5 and HLA-G6 isoforms from shedded HLA-G1.

Properties

Form	Liquid
Buffer	PBS
Preservative	15mM Sodium azide
Storage	Store as concentrated solution. Centrifuge briefly prior to opening vial. Store at 4°C. DO NOT FREEZE.
Concentration	1 mg/ml (Please refer to the vial label for the specific concentration.)
Immunogen	C-terminal amino acid sequence (22-mer) of soluble HLA-G5 and HLA-G6 proteins coupled to ovalbumin.
Purification	Purified IgG



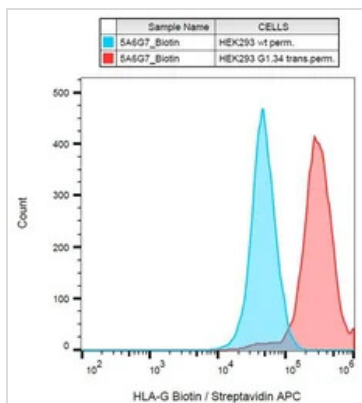
For full product information, images and publications, please visit our [website](#).

Conjugation Biotin
The reagent is free of unconjugated biotin.

Note For laboratory research use only. Not for any clinical, therapeutic, or diagnostic use in humans or animals. Not for animal or human consumption.

Purchasers shall not, and agree not to enable third parties to, analyze, copy, reverse engineer or otherwise attempt to determine the structure or sequence of the product.

DATA IMAGES



GTX80261 FCM Image

FACS (intracellular staining) analysis of HLA-G1 transfectants using GTX80261 HLA-G antibody [5A6G7] (Biotin).



For full product information, images and publications, please visit our [website](#).