

Mouse Anti-Human IgE antibody [4H10] (FITC)

Cat. No. GTX80274

Host	Mouse
Clonality	Monoclonal
Isotype	IgG1
Application	FACS
Reactivity	Human

Package
100 µg

APPLICATION

Application Note

*Optimal dilutions/concentrations should be determined by the researcher.

Suggested dilution	Recommended dilution
FACS	Assay dependent

Not tested in other applications.

Product Note

This antibody recognizes an epitope different from the ones recognized by BE5 and 4G7 antibodies to IgE. The epitope is located within the amino acids 267-279 (TWLEDGQVMDVDL).

PROPERTIES

Form	Liquid
Buffer	PBS
Preservative	15mM Sodium azide
Storage	Store as concentrated solution. Centrifuge briefly prior to opening vial. Store at 4°C. DO NOT FREEZE. Protect from light.
Concentration	0.1 mg/ml (Please refer to the vial label for the specific concentration.)
Immunogen	Purified human IgE.
Purification	Purified by size-exclusion chromatography
Conjugation	Fluorescein isothiocyanate (FITC)

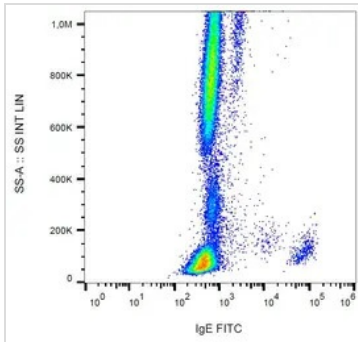
Note

For laboratory research use only. Not for any clinical, therapeutic, or diagnostic use in humans or animals. Not for animal or human consumption.

Purchasers shall not, and agree not to enable third parties to, analyze, copy, reverse engineer or otherwise attempt to determine the structure or sequence of the product.



For full product information, images and publications, please visit our [website](#).

DATA IMAGES

GTX80274 FACS Image

FACS analysis of human peripheral blood using GTX80274 Human IgE antibody [4H10] (FITC).



For full product information, images and publications, please visit our [website](https://www.genetex.com).