

CD19 antibody [4G7]

Cat. No. GTX80276

Host	Mouse
Clonality	Monoclonal
Isotype	IgG1
Applications	ICC/IF, FCM
Reactivity	Human

Package
100 µg

Applications

Application Note

*Optimal dilutions/concentrations should be determined by the researcher.

Suggested dilution	Recommended dilution
ICC/IF	Assay dependent
FCM	Assay dependent

Not tested in other applications.

Product Note

This antibody recognizes an epitope different from the ones recognized by BE5 and 4H10 antibodies to IgE. The epitope is located within the amino acids 103-115 (WSDYNFDYSSSEE).

Properties

Form	Liquid
Buffer	PBS
Preservative	15mM Sodium azide
Storage	Store as concentrated solution. Centrifuge briefly prior to opening vial. Store at 4°C. DO NOT FREEZE.
Concentration	1 mg/ml (Please refer to the vial label for the specific concentration.)
Immunogen	Human CCL (chronic lymphocytic leukemia) cells
Purification	Protein A purified
Conjugation	Unconjugated

Note

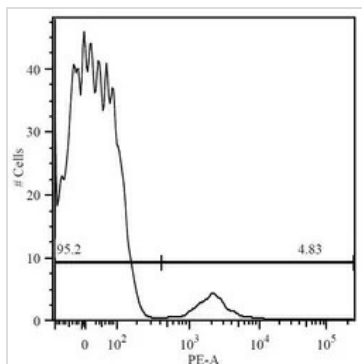
For laboratory research use only. Not for any clinical, therapeutic, or diagnostic use in humans or animals. Not for animal or human consumption.

Purchasers shall not, and agree not to enable third parties to, analyze, copy, reverse engineer or otherwise attempt to determine the structure or sequence of the product.



For full product information, images and publications, please visit our [website](#).

DATA IMAGES



GTX80276 FCM Image

FACS analysis of human peripheral blood leukocytes using GTX80276 CD19 antibody [4G7].



For full product information, images and publications, please visit our [website](#).