

## Mouse Anti-Human lambda light chain antibody [4C2] (PE)

Cat. No. GTX80281

Host	Mouse
Clonality	Monoclonal
Isotype	IgG1
Applications	FCM
Reactivity	Human

**Package**  
100 test

## Applications

## Application Note

\*Optimal dilutions/concentrations should be determined by the researcher.

Suggested dilution	Recommended dilution
FCM	20 µl reagent / 100 µl of whole blood or 10 <sup>6</sup> cells in a suspension
Not tested in other applications.	

**Product Note** We do not recommend use of this product for Rabbit,Goat,Sheep,Hamster,Guinea pig samples.

## Properties

Form	Liquid
Buffer	PBS
Preservative	15mM Sodium azide
Storage	Store as concentrated solution. Centrifuge briefly prior to opening vial. Store at 4°C. DO NOT FREEZE. Protect from light.
Concentration	Batch dependent (Please refer to the vial label for the specific concentration.)
Purification	Purified by size-exclusion chromatography
Conjugation	Phycoerythrin (PE) <a href="#">Wavelength</a>

## Note

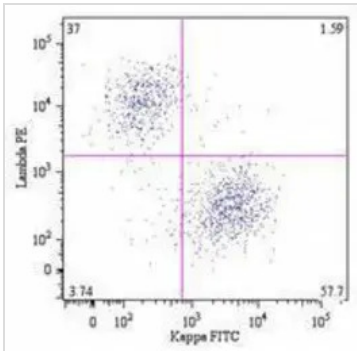
For laboratory research use only. Not for any clinical, therapeutic, or diagnostic use in humans or animals. Not for animal or human consumption.

Purchasers shall not, and agree not to enable third parties to, analyze, copy, reverse engineer or otherwise attempt to determine the structure or sequence of the product.



For full product information, images and publications, please visit our [website](#).

## DATA IMAGES



### GTX80281 FCM Image

B lymphocytes (CD19+) in a dot-plot Lambda PE vs. Kappa FITC. Kappa light chain detected by A8B5 antibody and lambda light chain by 4C2 antibody, CD19 by LT19 antibody.



For full product information, images and publications, please visit our [website](#).