

CD3 epsilon antibody [145-2C11] (APC)

Cat. No. GTX80303

Host	Armenian Hamster
Clonality	Monoclonal
Isotype	IgG1
Applications	FCM
Reactivity	Mouse

References (10)

Package

100 µg

PRODUCT

Summary

The 145-2C11 antibody is specific for mouse CD3ε, also known as CD3 epsilon, a 20 kDa subunit of the T cell receptor complex, along with CD3 gamma and CD3 delta. These integral membrane protein chains assemble with additional chains of the T cell receptor (TCR), as well as CD3 zeta chain, to form the T cell receptor – CD3 complex. Together with co-receptors CD4 or CD8, the complex serves to recognize antigens bound to MHC molecules on antigen-presenting cells. Such interactions promote T cell receptor signaling (T cell activation) and can result in a number of cellular responses including proliferation, differentiation, production of cytokines or activation-induced cell death. CD3 is differentially expressed during thymocyte-to-T cell development and on all mature T cells.

Applications

Application Note

*Optimal dilutions/concentrations should be determined by the researcher.

Suggested dilution	Recommended dilution
--------------------	----------------------

FCM	Assay dependent
-----	-----------------

Not tested in other applications.

Product Note

The hamster monoclonal antibody 145-2C11 reacts with mouse CD3 (epsilon subunit). This antibody is commonly used as a phenotypic marker for mouse T cells.

Properties

Form	Liquid
Buffer	10mM NaH ₂ PO ₄ , 150mM NaCl, 0.1% Gelatin
Preservative	0.09% Sodium azide
Storage	Store as concentrated solution. Centrifuge briefly prior to opening vial. Store at 4°C. DO NOT FREEZE. Protect from light.
Concentration	0.2 mg/ml (Please refer to the vial label for the specific concentration.)
Immunogen	Mouse BM10-37 cytotoxic T lymphocytes
Purification	Purified by affinity chromatography From tissue culture supernatant
Conjugation	Allophycocyanin (APC) Wavelength



For full product information, images and publications, please visit our [website](#).

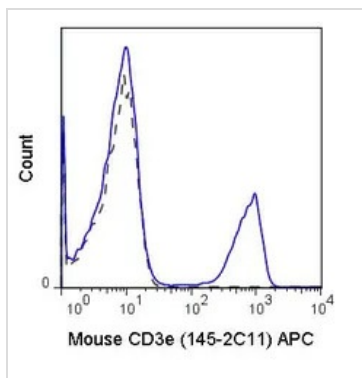
Date 2025 / 09 / 08 Page 1 of 2

For laboratory research use only. Not for any clinical, therapeutic, or diagnostic use in humans or animals. Not for animal or human consumption.

Note

Purchasers shall not, and agree not to enable third parties to, analyze, copy, reverse engineer or otherwise attempt to determine the structure or sequence of the product.

DATA IMAGES



GTx80303 FCM Image

FACS analysis of C57Bl/6 splenocytes using GTx80303 CD3 epsilon antibody [145-2C11] (APC).

Solid line : Primary antibody

Dashed line : APC Armenian hamster IgG isotype control

Antibody amount : 0.25 µg



For full product information, images and publications, please visit our [website](#).