

## MUS81 antibody [MTA30(2G10/3)]

Cat. No. GTX80370

Host	Mouse
Clonality	Monoclonal
Isotype	IgG2a
Applications	WB, ICC/IF, FCM, IP
Reactivity	Human

Package

50 µl

## Applications

## Application Note

\*Optimal dilutions/concentrations should be determined by the researcher.

Suggested dilution	Recommended dilution
WB	1:1000
ICC/IF	Assay dependent
FCM	0.5µg/10 <sup>6</sup> cells
IP	Assay dependent

Not tested in other applications.

**Calculated MW** 61 kDa. ( [Note](#) )

## Properties

Form	Liquid
Buffer	PBS
Preservative	0.1% Sodium azide
Storage	Store as concentrated solution. Centrifuge briefly prior to opening vial. For short-term storage (1-2 weeks), store at 4°C. For long-term storage, aliquot and store at -20°C or below. Avoid multiple freeze-thaw cycles.
Concentration	Batch dependent (Please refer to the vial label for the specific concentration.)
Purification	Protein A purified
Conjugation	Unconjugated

## Note

For laboratory research use only. Not for any clinical, therapeutic, or diagnostic use in humans or animals. Not for animal or human consumption.

Purchasers shall not, and agree not to enable third parties to, analyze, copy, reverse engineer or otherwise attempt to determine the structure or sequence of the product.



For full product information, images and publications, please visit our [website](#).

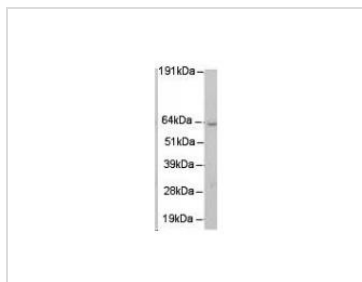
**DATA IMAGES**

**GTx80370 WB Image**

Figure legend : WB analysis of HeLa cells using GTx80370 MUS81 antibody [MTA30(2G10/3)].



For full product information, images and publications, please visit our [website](https://www.genetex.com).