

## Mad2 antibody

**Cat. No. GTX80373**

<b>Host</b>	Rabbit
<b>Clonality</b>	Polyclonal
<b>Isotype</b>	IgG
<b>Applications</b>	WB, ICC/IF
<b>Reactivity</b>	Yeast

**Package**  
50 µl

## Applications

**Application Note****Recommended Starting Dilutions:**

Use at 1:100

Optimal dilutions should be determined experimentally by the researcher.

**Product Note**      Yeast Mad2p

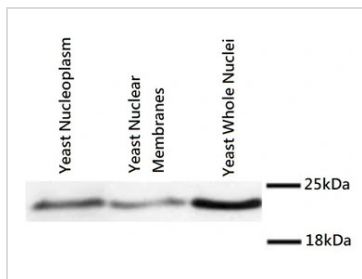
## Properties

**Form**      Liquid**Buffer**      Serum**Preservative**      0.1% Sodium azide**Storage**      Store as concentrated solution. Centrifuge briefly prior to opening vial. For short-term storage (1-2 weeks), store at 4°C. For long-term storage, aliquot and store at -20°C or below. Avoid multiple freeze-thaw cycles.**Concentration**      Batch dependent (Please refer to the vial label for the specific concentration.)**Immunogen**      Purified bacterial recombinant His6-fusion Mad2p**Conjugation**      Unconjugated**Note**      For laboratory research use only. Not for any clinical, therapeutic, or diagnostic use in humans or animals. Not for animal or human consumption.

Purchasers shall not, and agree not to enable third parties to, analyze, copy, reverse engineer or otherwise attempt to determine the structure or sequence of the product.

For full product information, images and publications, please visit our [website](#).

## DATA IMAGES

**GTX80373 WB Image**

WB analysis of yeast extracts using GTX80373 Mad2 antibody.

Dilution : 1:100



For full product information, images and publications, please visit our [website](#).