

hCG beta antibody [WM16/71]

Cat. No. GTX80394

Host	Mouse
Clonality	Monoclonal
Isotype	IgG1
Applications	WB, EIA, RIA
Reactivity	Human

Package

50 µl

Applications

Application Note

Optimal dilutions should be determined experimentally by the researcher.

Product Note Human beta-HCG, does not cross react with whole HCG or the alpha-chain

Properties

Form	Liquid
Buffer	PBS
Preservative	0.1% Sodium azide
Storage	Store as concentrated solution. Centrifuge briefly prior to opening vial. For short-term storage (1-2 weeks), store at 4°C. For long-term storage, aliquot and store at -20°C or below. Avoid multiple freeze-thaw cycles.
Concentration	Batch dependent (Please refer to the vial label for the specific concentration.)
Immunogen	Purified human beta-hCG
Purification	Protein A
Conjugation	Unconjugated

Note

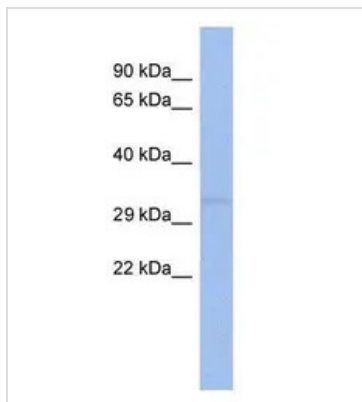
For laboratory research use only. Not for any clinical, therapeutic, or diagnostic use in humans or animals. Not for animal or human consumption.

Purchasers shall not, and agree not to enable third parties to, analyze, copy, reverse engineer or otherwise attempt to determine the structure or sequence of the product.



For full product information, images and publications, please visit our [website](#).

DATA IMAGES



GTX80394 WB Image

Western Blot analysis of SIX1 expression in PANC1 cell lysate using anti-SIX1 antibody (GTX80394) at 1 µg/mL.



For full product information, images and publications, please visit our [website](#).