

Mouse Anti-human IgG (Fc) antibody [4A10]

Cat. No. GTX80417

Host	Mouse
Clonality	Monoclonal
Isotype	IgG1
Applications	WB, ICC/IF, ELISA
Reactivity	Human

Package
100 µl

Applications

Application Note

*Optimal dilutions/concentrations should be determined by the researcher.

Suggested dilution	Recommended dilution
WB	1/500 - 1/2000
ICC/IF	1/200 - 1/1000
ELISA	1/10000

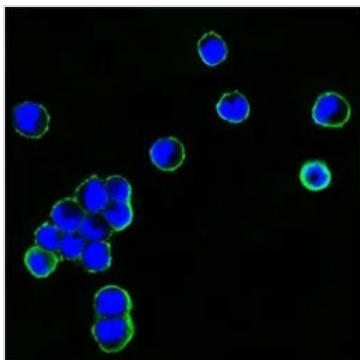
Not tested in other applications.

Properties

Form	Liquid
Buffer	Ascites
Preservative	0.03% Sodium azide
Storage	Store as concentrated solution. Centrifuge briefly prior to opening vial. For short-term storage (1-2 weeks), store at 4°C. For long-term storage, aliquot and store at -20°C or below. Avoid multiple freeze-thaw cycles.
Immunogen	Purified fusion protein with human IgG (Fc) tag.
Purification	Unpurified
Conjugation	Unconjugated
Note	For laboratory research use only. Not for any clinical, therapeutic, or diagnostic use in humans or animals. Not for animal or human consumption. Purchasers shall not, and agree not to enable third parties to, analyze, copy, reverse engineer or otherwise attempt to determine the structure or sequence of the product.



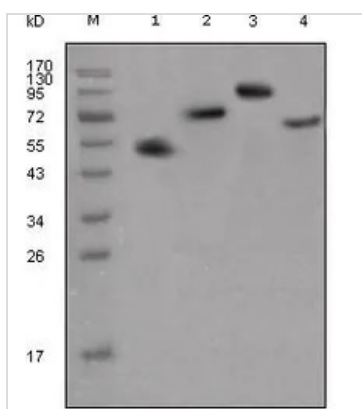
For full product information, images and publications, please visit our [website](#).

DATA IMAGES

GTX80417 ICC/IF Image

ICC/IF analysis of HEK293 cells transfected with recombinant plasmid with human IgG Fc tag using GTX80417 human IgG (Fc) antibody [4A10].

Green : human IgG Fc

Blue: DRAQ5 fluorescent DNA dye


GTX80417 WB Image

WB analysis of different fusion proteins with human IgG(Fc specific) tag using GTX80417 human IgG (Fc) antibody [4A10].



For full product information, images and publications, please visit our [website](https://www.genetex.com).