

## GABA A Receptor delta antibody, Internal

Cat. No. GTX80429

<b>Host</b>	Rabbit
<b>Clonality</b>	Polyclonal
<b>Isotype</b>	IgG
<b>Applications</b>	WB, IHC-P, FCM
<b>Reactivity</b>	Human, Mouse

Package  
400 µl

## Applications

## Application Note

\*Optimal dilutions/concentrations should be determined by the researcher.

Suggested dilution	Recommended dilution
WB	1:1000
IHC-P	1:50-1:100
FCM	1:10-1:50

Not tested in other applications.

**Calculated MW** 51 kDa. ( [Note](#) )

## Properties

<b>Form</b>	Liquid
<b>Buffer</b>	PBS
<b>Preservative</b>	0.09% Sodium azide
<b>Storage</b>	Store as concentrated solution. Centrifuge briefly prior to opening vial. For short-term storage (1-2 weeks), store at 4°C. For long-term storage, aliquot and store at -20°C or below. Avoid multiple freeze-thaw cycles.
<b>Concentration</b>	Batch dependent (Please refer to the vial label for the specific concentration.)
<b>Immunogen</b>	KLH conjugated synthetic peptide between 331-358 amino acids from the Central region of human GABRD.
<b>Purification</b>	Protein A purified, followed by peptide affinity purification.
<b>Conjugation</b>	Unconjugated

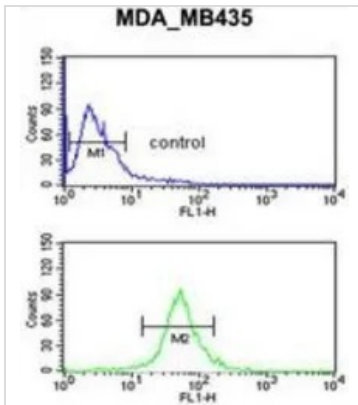
## Note

For laboratory research use only. Not for any clinical, therapeutic, or diagnostic use in humans or animals. Not for animal or human consumption.

Purchasers shall not, and agree not to enable third parties to, analyze, copy, reverse engineer or otherwise attempt to determine the structure or sequence of the product.



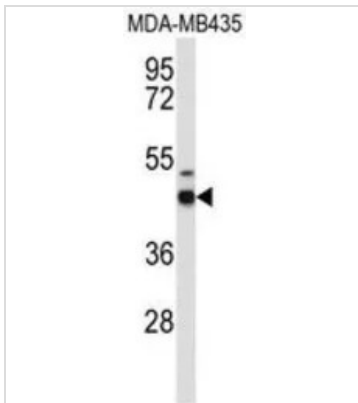
For full product information, images and publications, please visit our [website](#).

**DATA IMAGES**

**GTX80429 FCM Image**

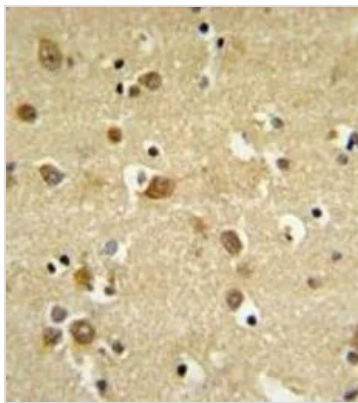
FACS analysis of MDA-MB435 cells using GTX80429 GABA A Receptor delta antibody, Internal.

Top histogram : negative control

Bottom histogram : MDA-MB435 cells


**GTX80429 WB Image**

WB analysis of MDA-MB435 cell lysate (35ug/lane) using GTX80429 GABA A Receptor delta antibody, Internal.


**GTX80429 IHC-P Image**

IHC-P analysis of mouse brain tissue using GTX80429 GABA A Receptor delta antibody, Internal.



For full product information, images and publications, please visit our [website](https://www.genetex.com).