

PTMS antibody, C-term

Cat. No. GTX80442

Host	Rabbit
Clonality	Polyclonal
Isotype	IgG
Applications	WB, IHC-P, FCM
Reactivity	Human

Package
400 µl

Applications

Application Note

*Optimal dilutions/concentrations should be determined by the researcher.

Suggested dilution	Recommended dilution
WB	1:1000
IHC-P	1:50-1:100
FCM	1:10-1:50

Not tested in other applications.

Calculated MW 12 kDa. ([Note](#))

Properties

Form	Liquid
Buffer	PBS
Preservative	0.09% Sodium azide
Storage	Store as concentrated solution. Centrifuge briefly prior to opening vial. For short-term storage (1-2 weeks), store at 4°C. For long-term storage, aliquot and store at -20°C or below. Avoid multiple freeze-thaw cycles.
Concentration	Batch dependent (Please refer to the vial label for the specific concentration.)
Immunogen	KLH conjugated synthetic peptide between 57-85 amino acids from the C-terminal region of human PTMS.
Purification	Protein A purified, followed by peptide affinity purification.
Conjugation	Unconjugated

Note

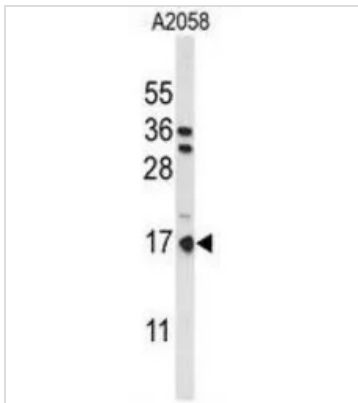
For laboratory research use only. Not for any clinical, therapeutic, or diagnostic use in humans or animals. Not for animal or human consumption.

Purchasers shall not, and agree not to enable third parties to, analyze, copy, reverse engineer or otherwise attempt to determine the structure or sequence of the product.

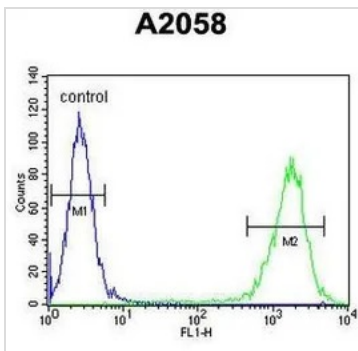


For full product information, images and publications, please visit our [website](#).

Date 2026 / 01 / 01 Page 1 of 2

DATA IMAGES

GTX80442 WB Image

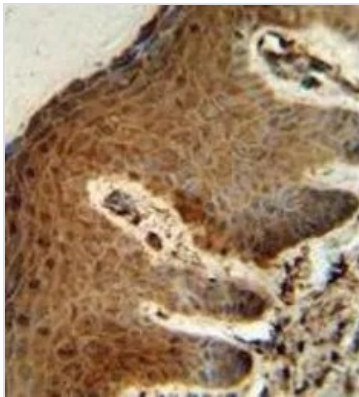
WB analysis of A2058 cell lysate (35ug/lane) using GTX80442 PTMS antibody, C-term.


GTX80442 FCM Image

FACS analysis of A2058 cells using GTX80442 PTMS antibody, C-term.

Green : primary antibody

Blue : negative control


GTX80442 IHC-P Image

IHC-P analysis of human skin tissue using GTX80442 PTMS antibody, C-term.



For full product information, images and publications, please visit our [website](https://www.genetex.com).