

## ASIC1 antibody, C-term

**Cat. No. GTX80451**

|                     |                |
|---------------------|----------------|
| <b>Host</b>         | Rabbit         |
| <b>Clonality</b>    | Polyclonal     |
| <b>Isotype</b>      | IgG            |
| <b>Applications</b> | WB, IHC-P, FCM |
| <b>Reactivity</b>   | Human          |

References ( 1 )

Package

400 µl

## Applications

**Application Note**

\*Optimal dilutions/concentrations should be determined by the researcher.

| Suggested dilution | Recommended dilution |
|--------------------|----------------------|
| WB                 | 1:1000               |
| IHC-P              | 1:50-1:100           |
| FCM                | 1:10-1:50            |

Not tested in other applications.

**Calculated MW** 60 kDa. ( [Note](#) )

## Properties

|                      |  |
|----------------------|--|
| <b>Form</b>          | Liquid   |
| <b>Buffer</b>        | PBS  |
| <b>Preservative</b>  | 0.09% Sodium azide   |
| <b>Storage</b>       | Store as concentrated solution. Centrifuge briefly prior to opening vial. For short-term storage (1-2 weeks), store at 4°C. For long-term storage, aliquot and store at -20°C or below. Avoid multiple freeze-thaw cycles. |
| <b>Concentration</b> | Batch dependent (Please refer to the vial label for the specific concentration.)   |
| <b>Immunogen</b>     | KLH conjugated synthetic peptide between 500-526 amino acids from the C-terminal region of human ACCN2.  |
| <b>Purification</b>  | Protein A purified, followed by peptide affinity purification.   |
| <b>Conjugation</b>   | Unconjugated   |

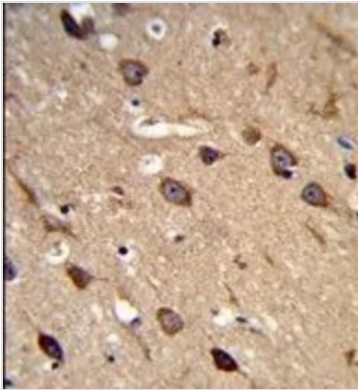
**Note**

For laboratory research use only. Not for any clinical, therapeutic, or diagnostic use in humans or animals. Not for animal or human consumption.

Purchasers shall not, and agree not to enable third parties to, analyze, copy, reverse engineer or otherwise attempt to determine the structure or sequence of the product.

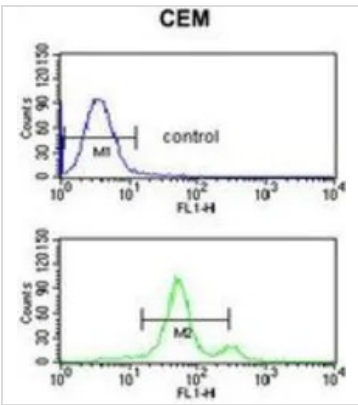
For full product information, images and publications, please visit our [website](#).

DATA IMAGES



**GTX80451 IHC-P Image**

IHC-P analysis of human brain tissue using GTX80451 ASIC1 antibody, C-term.

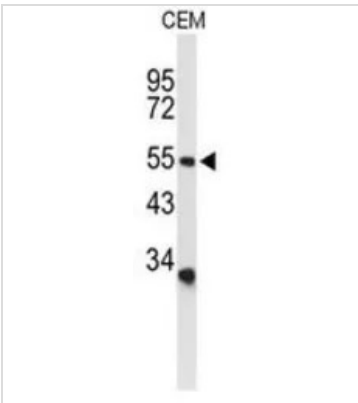


**GTX80451 FCM Image**

FACS analysis of CEM cells using GTX80451 ASIC1 antibody, C-term.

Top histogram : negative control

Bottom histogram : CEM cells



**GTX80451 WB Image**

WB analysis of CEM cell lysate (35ug/lane) using GTX80451 ASIC1 antibody, C-term.



For full product information, images and publications, please visit our [website](#).