

EFEMP2 antibody, C-term

Cat. No. GTX80452

Host	Rabbit
Clonality	Polyclonal
Isotype	IgG
Applications	WB, FCM
Reactivity	Human, Mouse

References (1)

Package

400 µl

Applications

Application Note

*Optimal dilutions/concentrations should be determined by the researcher.

Suggested dilution	Recommended dilution
WB	1:1000
FCM	1:10-1:50

Not tested in other applications.

Calculated MW 49 kDa. ([Note](#))

Properties

Form	Liquid
Buffer	PBS
Preservative	0.09% Sodium azide
Storage	Store as concentrated solution. Centrifuge briefly prior to opening vial. For short-term storage (1-2 weeks), store at 4°C. For long-term storage, aliquot and store at -20°C or below. Avoid multiple freeze-thaw cycles.
Concentration	Batch dependent (Please refer to the vial label for the specific concentration.)
Immunogen	KLH conjugated synthetic peptide between 386-414 amino acids from the C-terminal region of human EFEMP2.
Purification	Protein A purified, followed by peptide affinity purification.
Conjugation	Unconjugated

Note

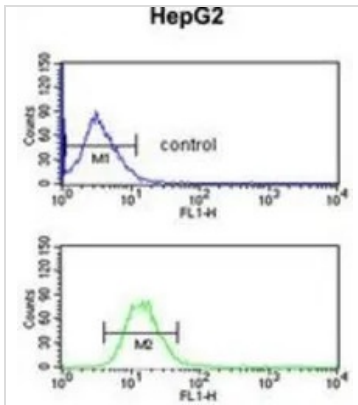
For laboratory research use only. Not for any clinical, therapeutic, or diagnostic use in humans or animals. Not for animal or human consumption.

Purchasers shall not, and agree not to enable third parties to, analyze, copy, reverse engineer or otherwise attempt to determine the structure or sequence of the product.



For full product information, images and publications, please visit our [website](#).

DATA IMAGES

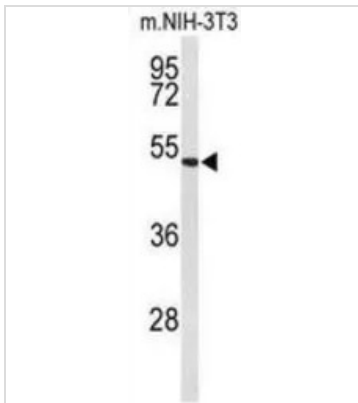


GTX80452 FCM Image

FACS analysis of HepG2 cells using GTX80452 EFEMP2 antibody, C-term.

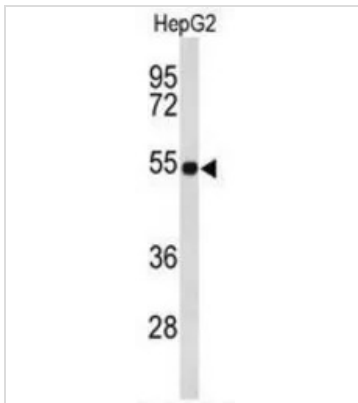
Top histogram : negative control

Bottom histogram : HepG2 cells



GTX80452 WB Image

WB analysis of NIH-3T3 cell lysate (35ug/lane) using GTX80452 EFEMP2 antibody, C-term.



GTX80452 WB Image

WB analysis of HepG2 cell lysate (35ug/lane) using GTX80452 EFEMP2 antibody, C-term.



For full product information, images and publications, please visit our [website](https://www.genetex.com).