

## RECK antibody, Internal

Cat. No. GTX80458

Host	Rabbit
Clonality	Polyclonal
Isotype	IgG
Applications	WB, IHC-P, FCM
Reactivity	Human

Package  
400 µl

## Applications

## Application Note

\*Optimal dilutions/concentrations should be determined by the researcher.

Suggested dilution	Recommended dilution
WB	1:1000
IHC-P	1:10-1:50
FCM	1:10-1:50

Not tested in other applications.

Calculated MW 106 kDa. ([Note](#))

## Properties

Form	Liquid
Buffer	PBS
Preservative	0.09% Sodium azide
Storage	Store as concentrated solution. Centrifuge briefly prior to opening vial. For short-term storage (1-2 weeks), store at 4°C. For long-term storage, aliquot and store at -20°C or below. Avoid multiple freeze-thaw cycles.
Concentration	Batch dependent (Please refer to the vial label for the specific concentration.)
Immunogen	KLH conjugated synthetic peptide between 430-456 amino acids from the Central region of human RECK.
Purification	Protein A purified, followed by peptide affinity purification.
Conjugation	Unconjugated

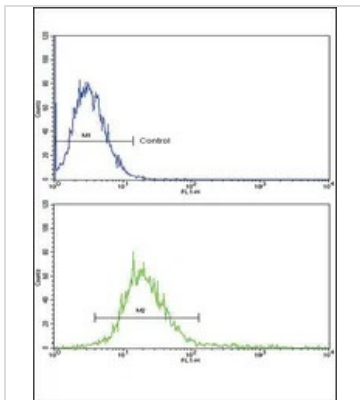
## Note

For laboratory research use only. Not for any clinical, therapeutic, or diagnostic use in humans or animals. Not for animal or human consumption.

Purchasers shall not, and agree not to enable third parties to, analyze, copy, reverse engineer or otherwise attempt to determine the structure or sequence of the product.



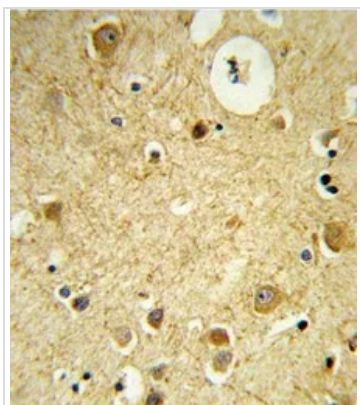
For full product information, images and publications, please visit our [website](#).

**DATA IMAGES**

**GTX80458 FCM Image**

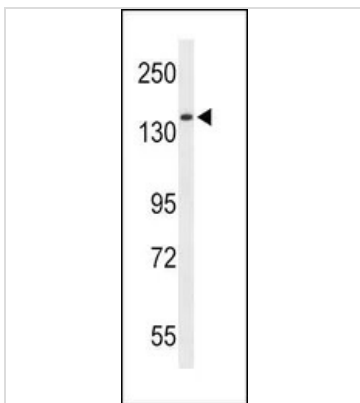
FACS analysis of K562 cells using GTX80458 RECK antibody, Internal.

Top histogram : negative control

Bottom histogram : K562 cells


**GTX80458 IHC-P Image**

IHC-P analysis of human brain tissue using GTX80458 RECK antibody, Internal.


**GTX80458 WB Image**

WB analysis of HepG2 cell lysate (35ug/lane) using GTX80458 RECK antibody, Internal.



For full product information, images and publications, please visit our [website](https://www.genetex.com).