

Kir6.2 antibody, N-term

Cat. No. GTX80493

Host	Rabbit
Clonality	Polyclonal
Isotype	IgG
Applications	WB, IHC-Fr, FCM
Reactivity	Human, Mouse

References (2)

Package

400 µl

Applications

Application Note

*Optimal dilutions/concentrations should be determined by the researcher.

Suggested dilution	Recommended dilution
WB	1:1000
IHC-Fr	Assay dependent
FCM	1:10-1:50

Not tested in other applications.

Calculated MW 44 kDa. ([Note](#))

Properties

Form	Liquid
Buffer	PBS
Preservative	0.09% Sodium azide
Storage	Store as concentrated solution. Centrifuge briefly prior to opening vial. For short-term storage (1-2 weeks), store at 4°C. For long-term storage, aliquot and store at -20°C or below. Avoid multiple freeze-thaw cycles.
Concentration	Batch dependent (Please refer to the vial label for the specific concentration.)
Immunogen	KLH conjugated synthetic peptide between 1-30 amino acids from the N-terminal region of human KCNJ11.
Purification	Protein A purified, followed by peptide affinity purification.
Conjugation	Unconjugated

Note

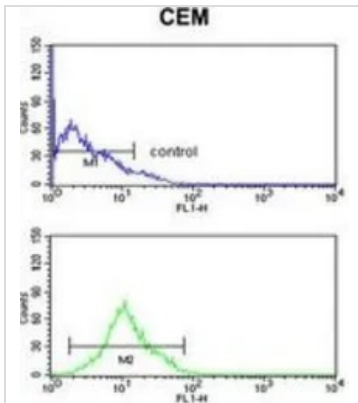
For laboratory research use only. Not for any clinical, therapeutic, or diagnostic use in humans or animals. Not for animal or human consumption.

Purchasers shall not, and agree not to enable third parties to, analyze, copy, reverse engineer or otherwise attempt to determine the structure or sequence of the product.



For full product information, images and publications, please visit our [website](#).

DATA IMAGES

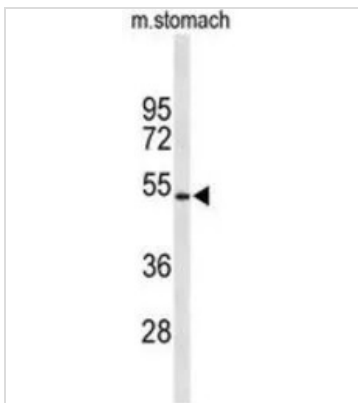


GTX80493 FCM Image

FACS analysis of CEM cells using GTX80493 Kir6.2 antibody, N-term.

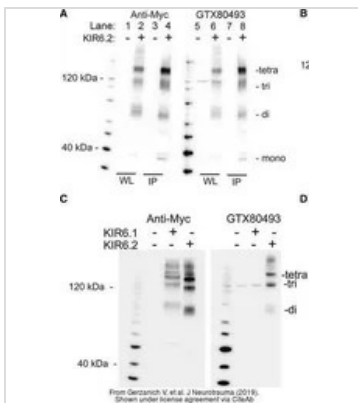
Top histogram : negative control

Bottom histogram : CEM cells



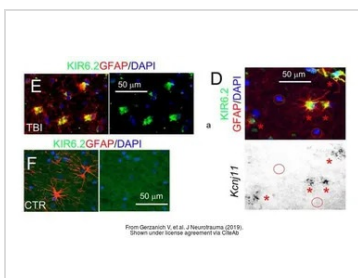
GTX80493 WB Image

WB analysis of mouse stomach tissue lysate (35ug/lane) using GTX80493 Kir6.2 antibody, N-term.



GTX80493 WB Image

The data was published in the journal J Neurotrauma in 2019. [PMID: 30160201](https://pubmed.ncbi.nlm.nih.gov/30160201/)



GTX80493 IHC-Fr Image

The data was published in the journal J Neurotrauma in 2019. [PMID: 30160201](https://pubmed.ncbi.nlm.nih.gov/30160201/)



For full product information, images and publications, please visit our [website](https://www.genetex.com).