

## GALNT3 antibody, Internal

Cat. No. GTX80494

Host	Rabbit
Clonality	Polyclonal
Isotype	IgG
Applications	WB, IHC-P, FCM
Reactivity	Human

Package  
400 µl

## Applications

## Application Note

\*Optimal dilutions/concentrations should be determined by the researcher.

Suggested dilution	Recommended dilution
WB	1:1000
IHC-P	1:10-1:50
FCM	1:10-1:50

Not tested in other applications.

Calculated MW 73 kDa. ( [Note](#) )

## Properties

Form	Liquid
Buffer	PBS
Preservative	0.09% Sodium azide
Storage	Store as concentrated solution. Centrifuge briefly prior to opening vial. For short-term storage (1-2 weeks), store at 4°C. For long-term storage, aliquot and store at -20°C or below. Avoid multiple freeze-thaw cycles.
Concentration	Batch dependent (Please refer to the vial label for the specific concentration.)
Immunogen	KLH conjugated synthetic peptide between 454-481 amino acids from the Central region of human GALNT3.
Purification	Protein A purified, followed by peptide affinity purification.
Conjugation	Unconjugated

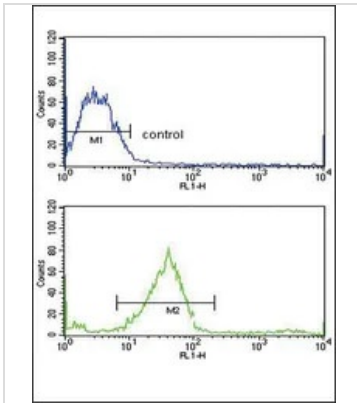
## Note

For laboratory research use only. Not for any clinical, therapeutic, or diagnostic use in humans or animals. Not for animal or human consumption.

Purchasers shall not, and agree not to enable third parties to, analyze, copy, reverse engineer or otherwise attempt to determine the structure or sequence of the product.

For full product information, images and publications, please visit our [website](#).

## DATA IMAGES

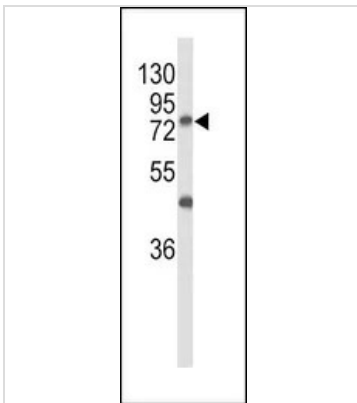


### GTx80494 FCM Image

FACS analysis of MCF-7 cells using GTx80494 GALNT3 antibody, Internal.

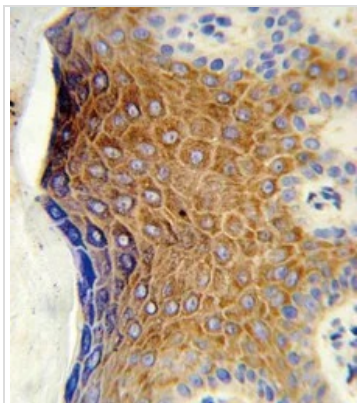
Top histogram : negative control

Bottom histogram : MCF-7 cells



### GTx80494 WB Image

WB analysis of MCF-7 cell lysate (35ug/lane) using GTx80494 GALNT3 antibody, Internal.



### GTx80494 IHC-P Image

IHC-P analysis of human skin tissue using GTx80494 GALNT3 antibody, Internal.



For full product information, images and publications, please visit our [website](https://www.genetex.com).