

DHRS3 antibody, Internal

Cat. No. GTX80507

Host	Rabbit
Clonality	Polyclonal
Isotype	IgG
Application	WB
Reactivity	Human, Mouse

Package
400 µl

APPLICATION

Application Note

*Optimal dilutions/concentrations should be determined by the researcher.

Suggested dilution	Recommended dilution
WB	1:1000

Not tested in other applications.

Calculated MW 34 kDa. ([Note](#))

PROPERTIES

Form	Liquid
Buffer	PBS
Preservative	0.09% Sodium azide
Storage	Store as concentrated solution. Centrifuge briefly prior to opening vial. For short-term storage (1-2 weeks), store at 4°C. For long-term storage, aliquot and store at -20°C or below. Avoid multiple freeze-thaw cycles.
Concentration	Batch dependent (Please refer to the vial label for the specific concentration.)
Immunogen	KLH conjugated synthetic peptide between 85-113 amino acids from the Central region of human DHRS3.
Purification	Protein A purified, followed by peptide affinity purification.
Conjugation	Unconjugated

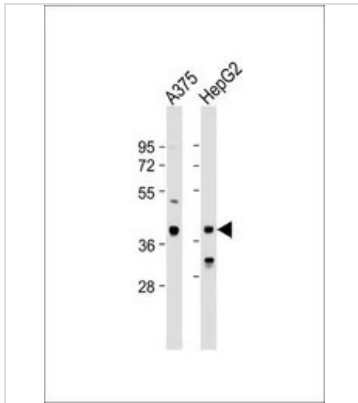
Note

For laboratory research use only. Not for any clinical, therapeutic, or diagnostic use in humans or animals. Not for animal or human consumption.

Purchasers shall not, and agree not to enable third parties to, analyze, copy, reverse engineer or otherwise attempt to determine the structure or sequence of the product.



For full product information, images and publications, please visit our [website](#).

DATA IMAGES

GTX80507 WB Image

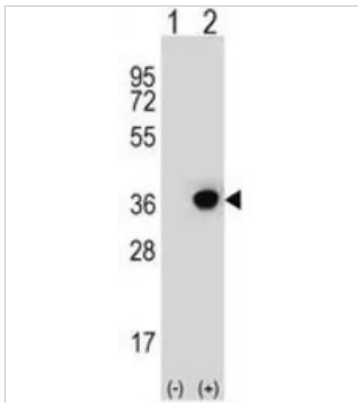
WB analysis of various samples using GTX80507 DHR3 antibody, Internal.

Lane 1: A375 whole cell lysate

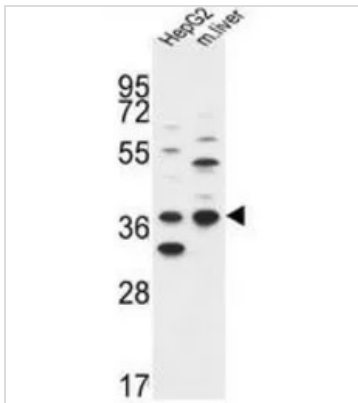
Lane 2: HepG2 whole cell lysate

Loading : 20 µg per lane

Dilution : 1:1000


GTX80507 WB Image

WB analysis of 293 cell lysate (2 ug/lane) either nontransfected (Lane 1) or transiently transfected with the DHR3(Lane 2) using GTX80507 DHR3 antibody, Internal.


GTX80507 WB Image

WB analysis of HepG2 cell and mouse liver tissue lysate (35ug/lane) using GTX80507 DHR3 antibody, Internal.



For full product information, images and publications, please visit our [website](https://www.genetex.com).