

TIMP3 antibody, Internal

Cat. No. GTX80547

Host	Rabbit
Clonality	Polyclonal
Isotype	IgG
Applications	WB, IHC-P, FCM
Reactivity	Human, Mouse

Package
400 µl

Applications

Application Note

*Optimal dilutions/concentrations should be determined by the researcher.

Suggested dilution	Recommended dilution
WB	1:1000
IHC-P	1:10-1:50
FCM	1:10-1:50

Not tested in other applications.

Calculated MW 24 kDa. ([Note](#))

Properties

Form	Liquid
Buffer	PBS
Preservative	0.09% Sodium azide
Storage	Store as concentrated solution. Centrifuge briefly prior to opening vial. For short-term storage (1-2 weeks), store at 4°C. For long-term storage, aliquot and store at -20°C or below. Avoid multiple freeze-thaw cycles.
Concentration	Batch dependent (Please refer to the vial label for the specific concentration.)
Immunogen	KLH conjugated synthetic peptide between 113-139 amino acids from the Central region of human TIMP3.
Purification	Protein A purified, followed by peptide affinity purification.
Conjugation	Unconjugated

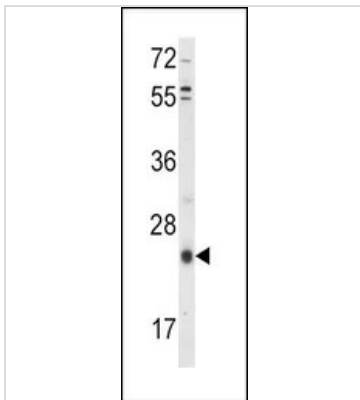
Note

For laboratory research use only. Not for any clinical, therapeutic, or diagnostic use in humans or animals. Not for animal or human consumption.

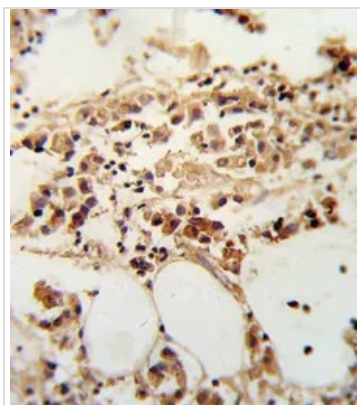
Purchasers shall not, and agree not to enable third parties to, analyze, copy, reverse engineer or otherwise attempt to determine the structure or sequence of the product.



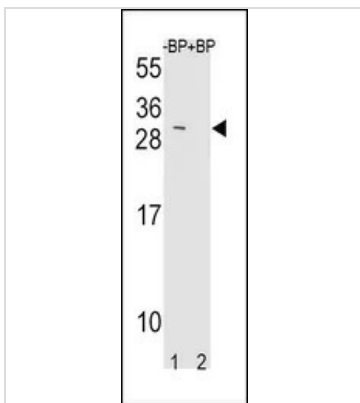
For full product information, images and publications, please visit our [website](#).

DATA IMAGES

GTX80547 WB Image

WB analysis of HepG2 cell lysate (35ug/lane) using GTX80547 TIMP3 antibody, Internal.


GTX80547 IHC-P Image

IHC-P analysis of human breast carcinoma using GTX80547 TIMP3 antibody, Internal.


GTX80547 WB Image

WB analysis of NIH-3T3 cell lysate using GTX80547 TIMP3 antibody, Internal.

Lane 1 : pre-incubated without blocking peptide

Lane 2 : pre-incubate with blocking peptide



For full product information, images and publications, please visit our [website](#).