

## MTTP antibody, C-term

Cat. No. GTX80580

Host	Rabbit
Clonality	Polyclonal
Isotype	IgG
Applications	WB, IHC-P
Reactivity	Human, Mouse

References ( 3 )

Package

400 µl

## Applications

## Application Note

\*Optimal dilutions/concentrations should be determined by the researcher.

Suggested dilution	Recommended dilution
WB	1:1000
IHC-P	1:10-1:50

Not tested in other applications.

Calculated MW 99 kDa. ( [Note](#) )

## Properties

Form	Liquid
Buffer	PBS
Preservative	0.09% Sodium azide
Storage	Store as concentrated solution. Centrifuge briefly prior to opening vial. For short-term storage (1-2 weeks), store at 4°C. For long-term storage, aliquot and store at -20°C or below. Avoid multiple freeze-thaw cycles.
Concentration	Batch dependent (Please refer to the vial label for the specific concentration.)
Immunogen	KLH conjugated synthetic peptide between 816-842 amino acids from the C-terminal region of human MTTP.
Purification	Protein A purified, followed by peptide affinity purification.
Conjugation	Unconjugated

## Note

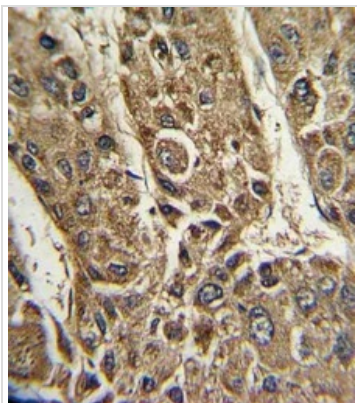
For laboratory research use only. Not for any clinical, therapeutic, or diagnostic use in humans or animals. Not for animal or human consumption.

Purchasers shall not, and agree not to enable third parties to, analyze, copy, reverse engineer or otherwise attempt to determine the structure or sequence of the product.



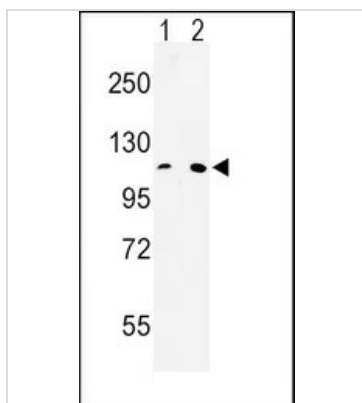
For full product information, images and publications, please visit our [website](#).

DATA IMAGES



**GTx80580 IHC-P Image**

IHC-P analysis of human hepatocarcinoma using GTx80580 MTTP antibody, C-term.



**GTx80580 WB Image**

WB analysis of HeLa(lane 1), 293(lane 2) cell lysate (35ug/lane) using GTx80580 MTTP antibody, C-term.



For full product information, images and publications, please visit our [website](https://www.genetex.com).