

## SPRR1B antibody, C-term

Cat. No. GTX80592

|              |            |
|--------------|------------|
| Host         | Rabbit     |
| Clonality    | Polyclonal |
| Isotype      | IgG        |
| Applications | WB, IHC-P  |
| Reactivity   | Human      |

Package  
400 µl

## Applications

## Application Note

\*Optimal dilutions/concentrations should be determined by the researcher.

| Suggested dilution | Recommended dilution |
|--------------------|----------------------|
| WB                 | 1:1000               |
| IHC-P              | 1:50-1:100           |

Not tested in other applications.

Calculated MW 10 kDa. ( [Note](#) )

## Properties

|               |  |
|---------------|--|
| Form          | Liquid   |
| Buffer        | PBS  |
| Preservative  | 0.09% Sodium azide   |
| Storage       | Store as concentrated solution. Centrifuge briefly prior to opening vial. For short-term storage (1-2 weeks), store at 4°C. For long-term storage, aliquot and store at -20°C or below. Avoid multiple freeze-thaw cycles. |
| Concentration | Batch dependent (Please refer to the vial label for the specific concentration.)   |
| Immunogen     | KLH conjugated synthetic peptide between 63-89 amino acids from the C-terminal region of human SPRR1B.   |
| Purification  | Protein A purified, followed by peptide affinity purification.   |
| Conjugation   | Unconjugated   |

## Note

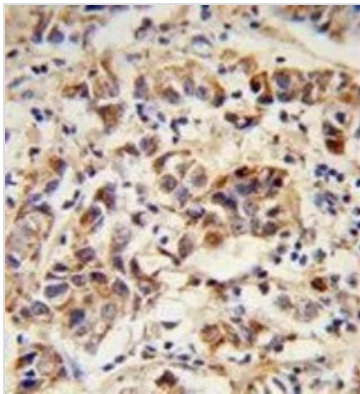
For laboratory research use only. Not for any clinical, therapeutic, or diagnostic use in humans or animals. Not for animal or human consumption.

Purchasers shall not, and agree not to enable third parties to, analyze, copy, reverse engineer or otherwise attempt to determine the structure or sequence of the product.



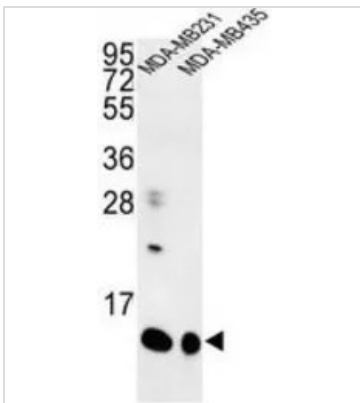
For full product information, images and publications, please visit our [website](#).

## DATA IMAGES



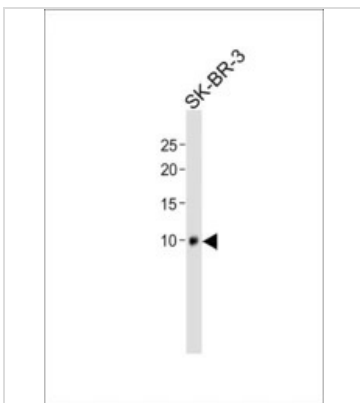
### GTX80592 IHC-P Image

IHC-P analysis of human breast carcinoma using GTX80592 SPRR1B antibody, C-term.



### GTX80592 WB Image

WB analysis of MDA-MB231, MDA-MB435 cell lysate (35ug/lane) using GTX80592 SPRR1B antibody, C-term.



### GTX80592 WB Image

WB analysis of SK-BR-3 using GTX80592 SPRR1B antibody, C-term.

Dilution : 1:1000

Loading : 20μg



For full product information, images and publications, please visit our [website](https://www.genetex.com).